

Product information presented here reflects conditions at time of publication. Consult factory regarding discrepancies or inconsistencies.



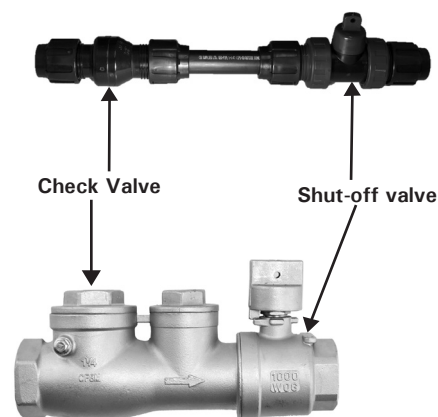
Accessories for LPS Systems (Low Pressure Sewers)



Curb Valve Assembly

- Lateral valve assembly installed at the entrance of each pressure sewer site
- Includes a 316 SS curb stop valve and check valve
- Curb stop valve used to isolate site from pressure sewer
- Check valve provides redundant protection against potentially harmful backflows
- 1.25" or 2" NPT connection for use with HDPE and PVC pressure sewer pipe and fittings (Adapters included)
- Rated up to 200 psi service pressure
- Designed for use with an optional curb box and valve extension rod

Size	Valve Material	Adapted to Pipe Material	Part Number	PSI Rating
1.25"	Stainless Steel	HDPE and PVC	10-4698	200
	PVC	HDPE	159571	125
		PVC	159575	125
2"	Stainless Steel	HDPE and PVC	10-4893	200
	PVC	HDPE	159572	125
		PVC	159576	125



Curb Box

#10-4875 (30" to 42")

#10-4867 (42" to 60")

- Class 30 cast iron construction
- Conforms to ASTM A48 / A48M-03 specifications
- Designed to fit over and attach to a 1.25" or 2" curb stop valve
- Two sizes, selected by valve burial depths; adjustable 30" to 42" or 42" to 60"
- Depth adjustments, secured by internal threads
- Bolt down cover, imprinted with SEWER marking
- Steel centering ring, for positioning and stabilizing the rod



Valve Extension Rod

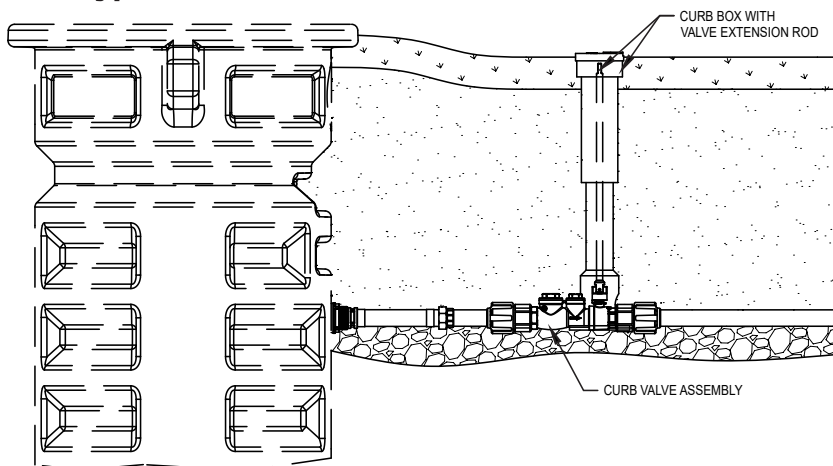
#10-4876 - 24" Rod

#10-4877 - 36" Rod

#10-4866 - 48" Rod

- 5/8" OD steel rod with means for connecting to the curb stop valve

Typical Curb Valve and Box Installation



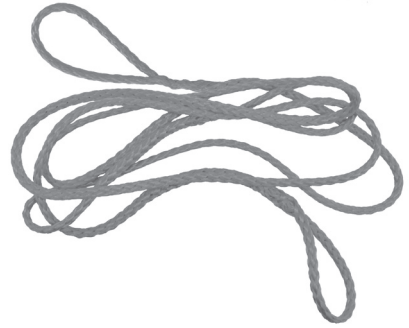
SK3240

Anti-Siphon Option # 10-4828



- Adapts to a 6932 replacement assembly
- Provides pump station air relief and anti-siphon protection
- 304 SS construction
- Rated up to 235 psi
- Pipe nipples and "Tee" included with the 6932

Red Lifting Rope #39-0162



- 3/8" x 12' braided polypropylene lifting rope
- For lifting pumps weighing up to 150 pounds
- Designed for strength, ease of handling and for mounting onto a pump's lifting bail

Flexible Discharge Hose-Installed on the basin discharge to prevent damage to piping and components caused by basin settling. #10-4751



- 1.25" NPT x 18" long
- Braided 304 SS flexible hose
- Rated up to 520 psi
- Other lengths available

Flex Hose Discharge Assembly #10-2038 -30" Flex Pipe

- 200 PSI flex pipe with 1.25" disconnect campbell



Flex Hose Discharge Elbow #018386- galvanized #019764- stainless steel



EQD Adapter Assemblies

#10-4824- Round female to rectangular male

#10-3592- Rectangular female to round male



- Enables a 6932 replacement assembly equipped with a round or rectangular EQD to adapt to the other type female EQD connection in the field
- 12" cord length, 14-6 SOOW jacketed neoprene cord

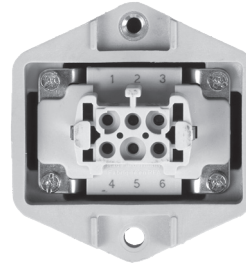
EQD Housing Assembly

#10-4931-Rectangular Housing, Male

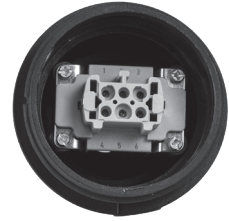
#10-4932-Rectangular Housing, Female

#10-4979-Round Housing, Female

#10-5233-Round housing, Male



10-4932



10-4979



RWD-LPS Simplex Control, For Pumps Equipped with Integrated Control Switches #51224-0001 & #61204-0002

- NEMA 4X enclosure, UL and CSA Listed
- Two types; Standard design and one with a generator receptacle for a 20 amp NEMA L21-20P plug
- Manual run function and high water alarm
- 61204-0002 Remote monitoring capability and ability to access historical performance data with addition of Zcontrol gateway
- For complete details refer to sales document ZM3152



MAIL TO: P.O. BOX 16347 • Louisville, KY 40256-0347
SHIP TO: 3649 Cane Run Road • Louisville, KY 40211-1961
Tel: (502) 778-2731 • 1 (800) 928-PUMP
Trusted. Tested. Tough.®

visit our web site:
zoellerengineered.com