

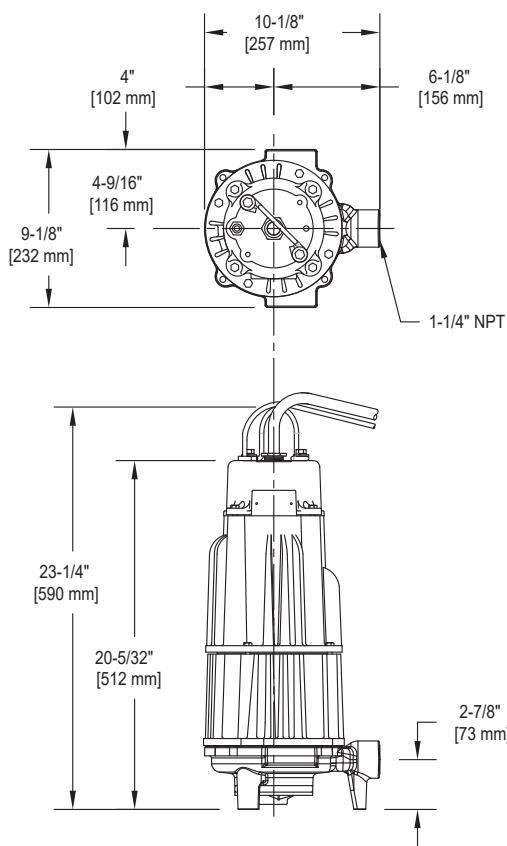
Product information presented here reflects conditions at time of publication. Consult factory regarding discrepancies or inconsistencies.



## GRINDER PUMP DIMENSIONAL DATA 1-1/4" HORIZONTAL DISCHARGE UNITS *Floor Mounted*

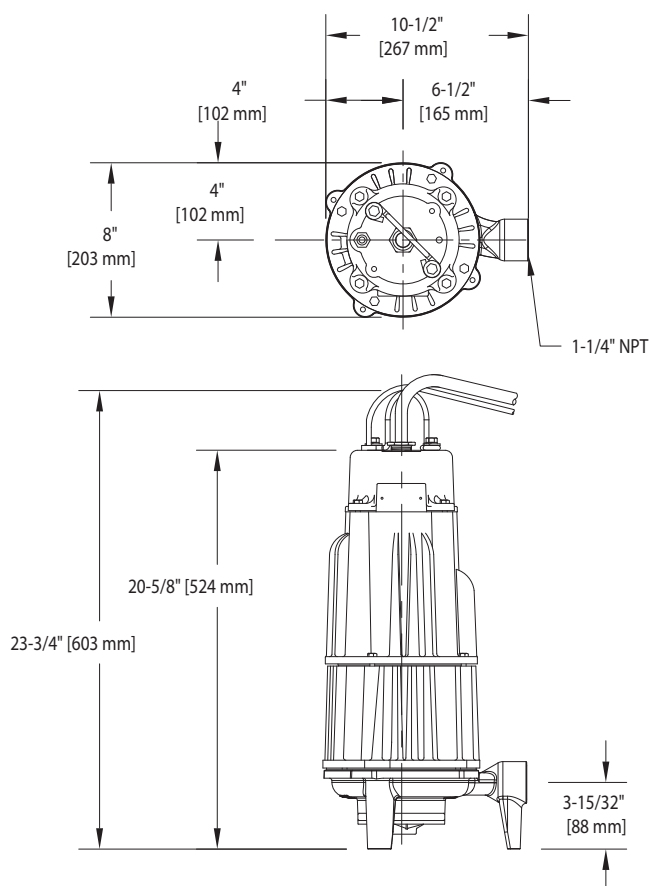


**7011**



SK3362

**7013**



SK3354

# GRINDER PUMP

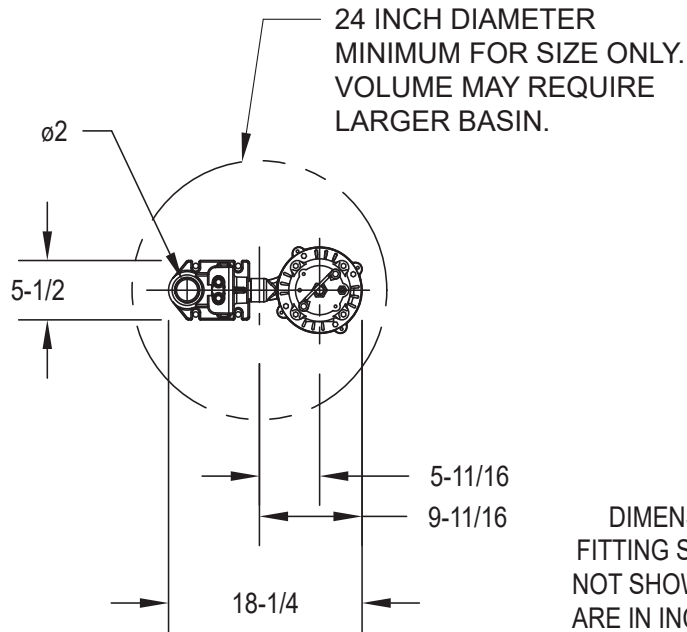
## DIMENSIONAL DATA

### 2 HP GRINDER PUMP - DUAL SEAL

#### 1.25" NPT X 2" Horizontal Discharge

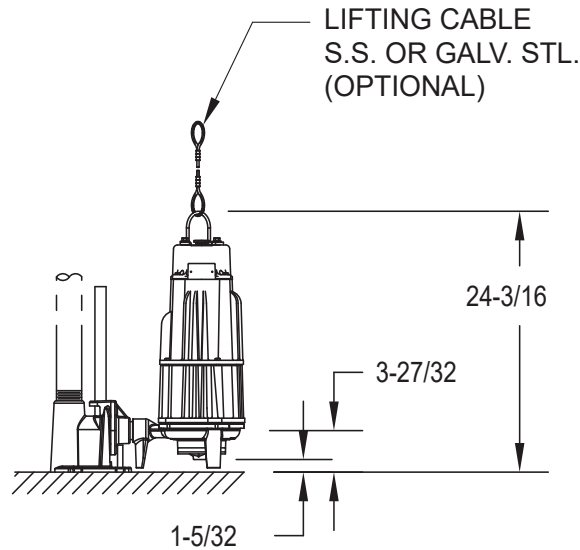


#### Flygt Adapter 39-0183



DIMENSIONS ARE BASED ON STD. ANSI  
FITTING SIZES. CHECK VALVES REQUIRED,  
NOT SHOWN FOR CLARITY. ALL DIMENSIONS  
ARE IN INCHES UNLESS OTHERWISE NOTED.

SIMPLEX INSTALLATION



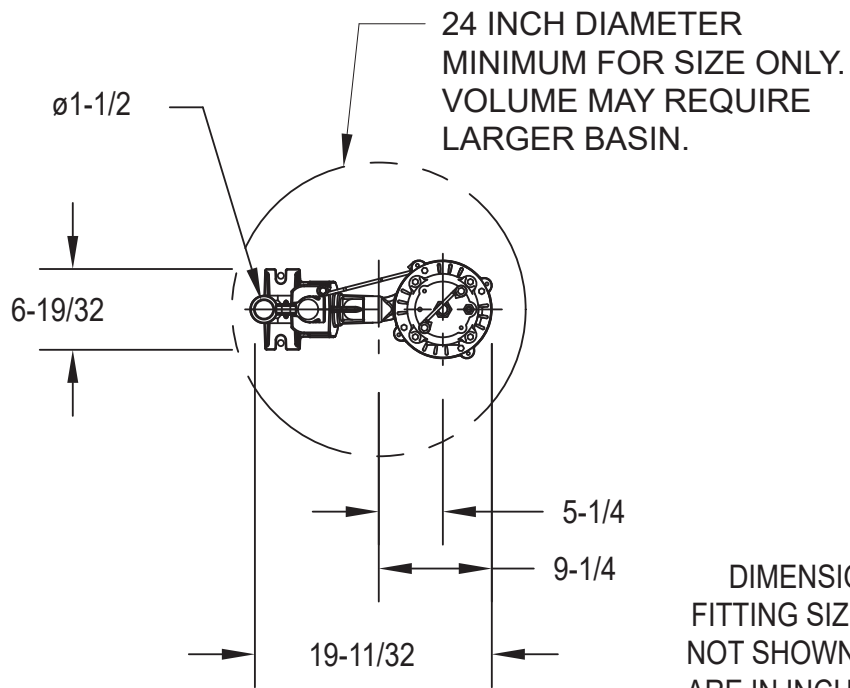
SK3373

Note: For other competitor  
adapters consult factory

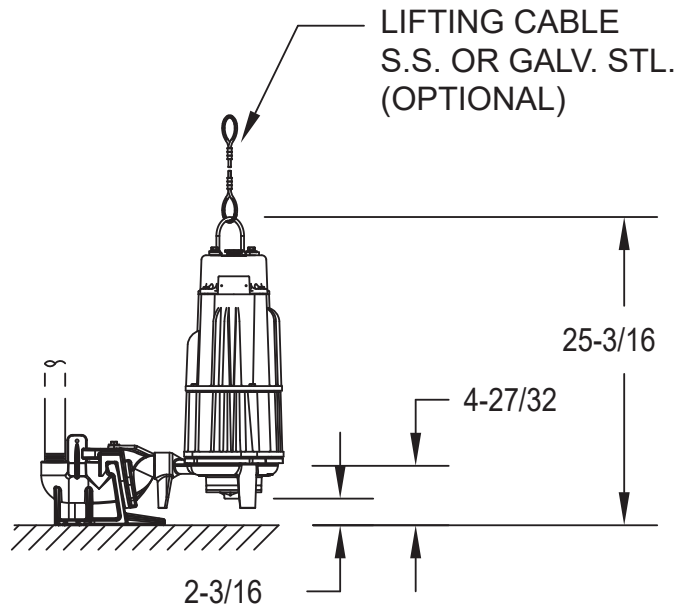
Zoeller Engineered Products • 3649 Cane Run Road • Louisville, Kentucky 40211-1961 • (502) 778-2731

SWPA Data Categories Presented -- Data on this sheet supply design information as the minimum recommended by the Submersible Wastewater Pump Association and is defined in accordance with SWPA's Standardized Definitions for Pump and Motor Characteristics. The accuracy of the data is the responsibility of Zoeller Engineered Products.

**Liberty Adapter  
39-0182**



DIMENSIONS ARE BASED ON STD. ANSI FITTING SIZES. CHECK VALVES REQUIRED, NOT SHOWN FOR CLARITY. ALL DIMENSIONS ARE IN INCHES UNLESS OTHERWISE NOTED.



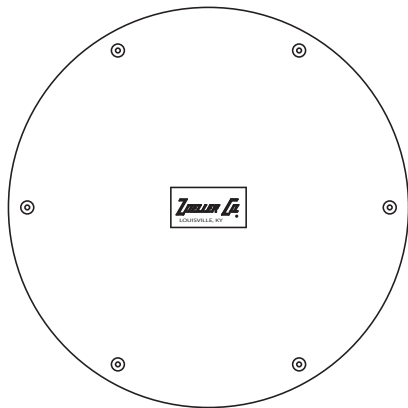
SK3374

Note: For other competitor adapters consult factory

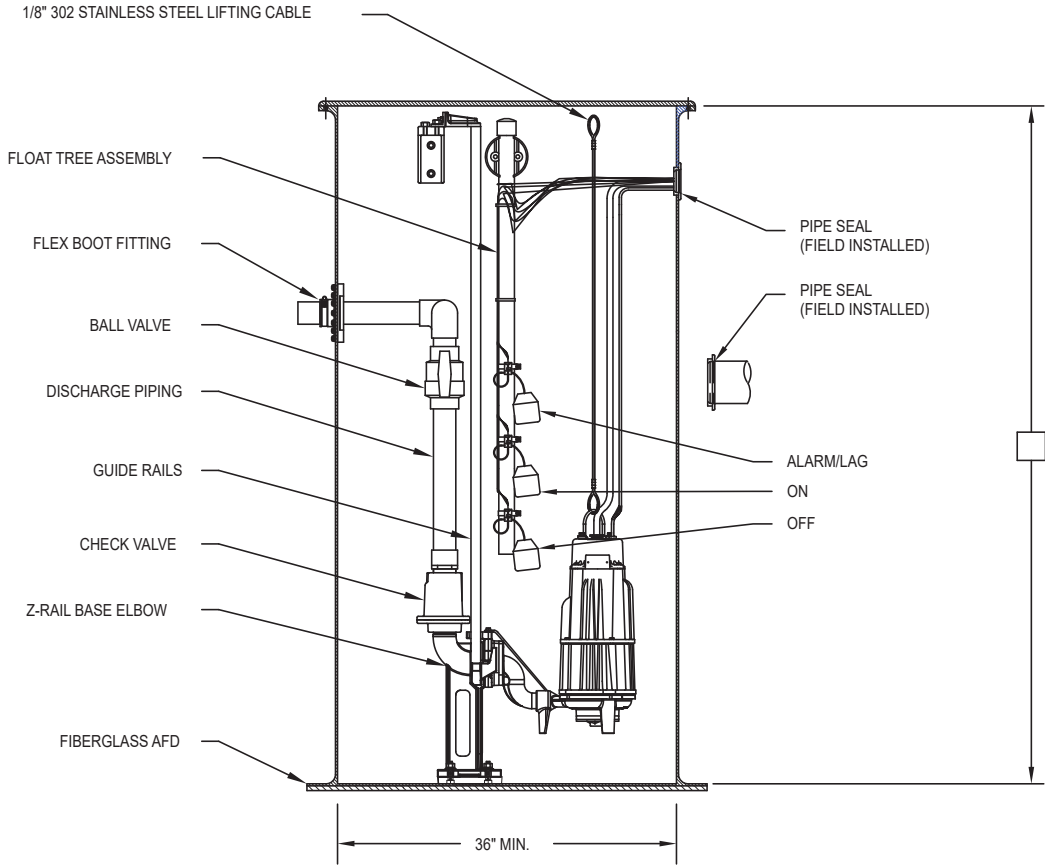
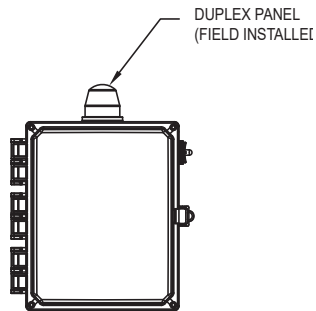
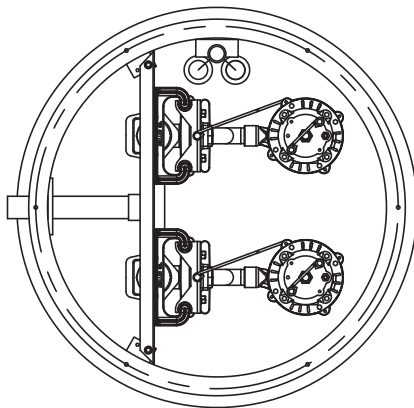
Liberty is trademark of Liberty Pumps

© Copyright 2023 Zoeller® Co. All rights reserved.

**Zoeller Z-Rail Assembly  
39-0137 & 39-0138**



SOLID FIBERGLASS COVER



SK3355