



MAIL TO: P.O. BOX 16347 • Louisville, KY 40256-0347
SHIP TO: 3649 Cane Run Road • Louisville, KY 40211-1961
Tel: (502) 778-2731 • 1 (800) 928-PUMP

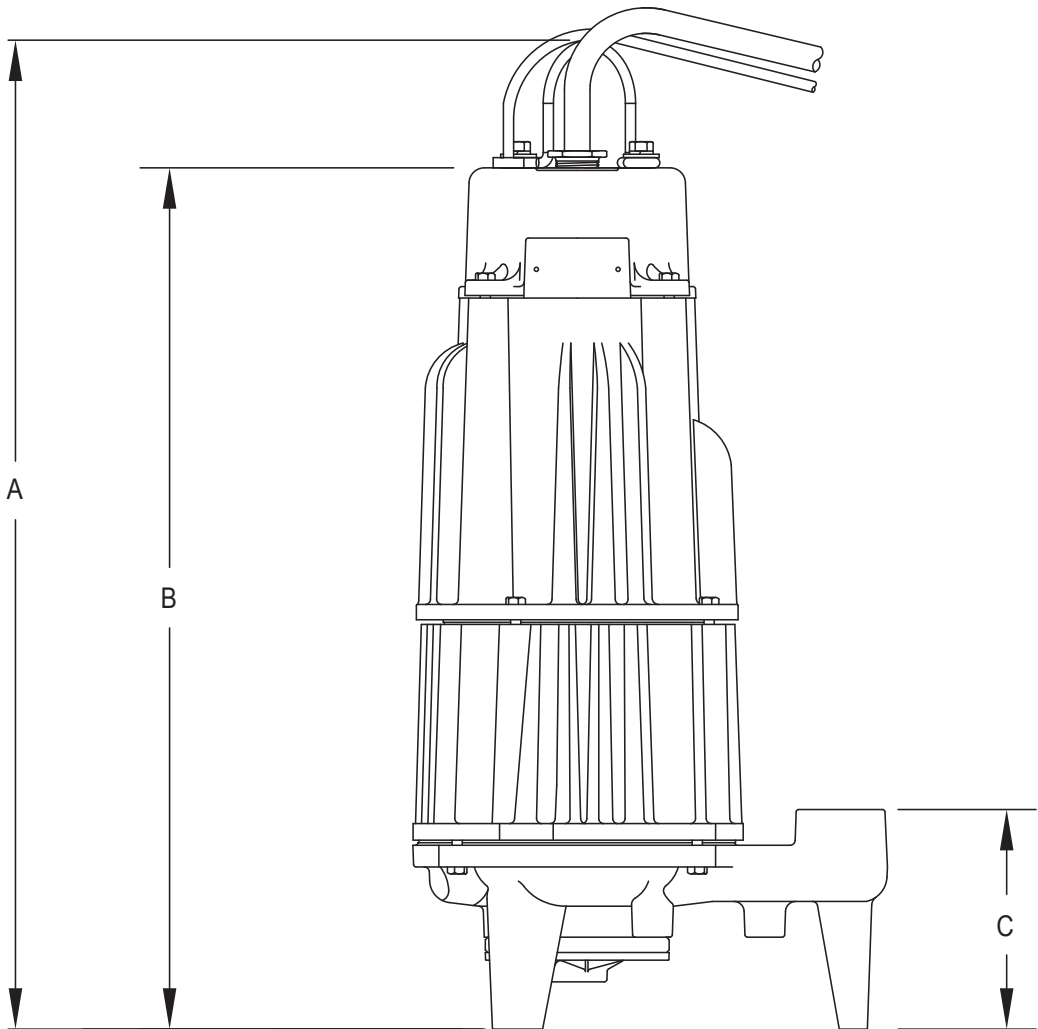
SECTION: Z3.10.400
ZM2625
0923
Supersedes
0215

Visit our website:
zoellerengineered.com

Product information presented here reflects conditions at time of publication. Consult factory regarding discrepancies or inconsistencies.



70 SERIES • MODELS 7011 & 7013
DIMENSIONAL DATA
2 HP GRINDER PUMP - DUAL SEAL
1.25" NPT Discharge
Floor Mounted



SK1322

MODEL	A	B	C
7011	24 7/32	21 3/32	5 3/8
7013	23 3/4	20 5/8	5

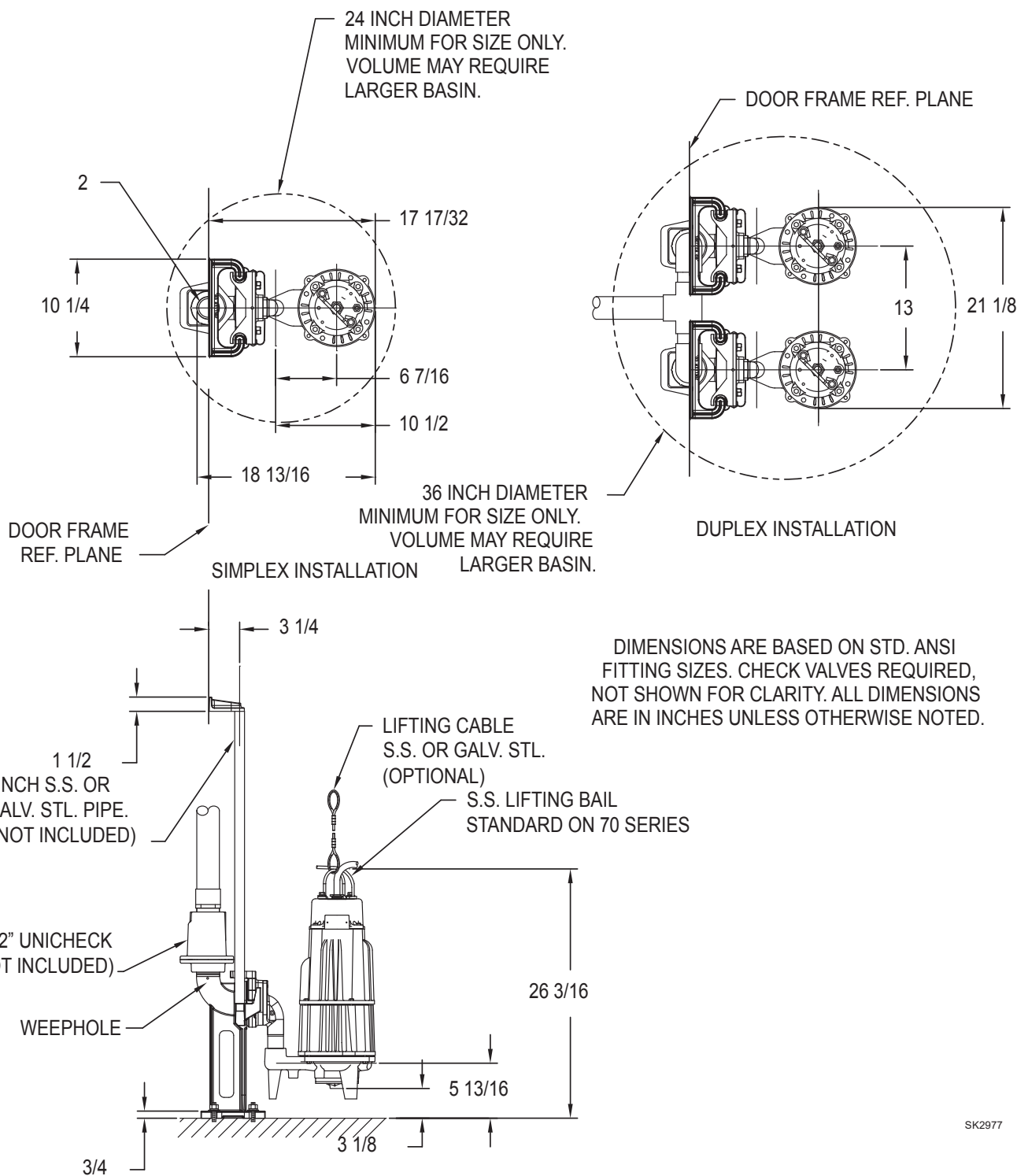
70 SERIES • MODELS 7011 & 7013

DIMENSIONAL DATA

2 HP GRINDER PUMP - DUAL SEAL

1.25" NPT X 2" NPT Discharge

39-0134 & 39-0135 Z-Rail® Disconnect System



SK2977

Zoeller Engineered Products • 3649 Cane Run Road • Louisville, Kentucky 40211-1961 • (502) 778-2731

SWPA Data Categories Presented -- Data on this sheet supply design information as the minimum recommended by the Submersible Wastewater Pump Association and is defined in accordance with SWPA's Standardized Definitions for Pump and Motor Characteristics. The accuracy of the data is the responsibility of Zoeller Engineered Products.

© Copyright 2023 Zoeller® Co. All rights reserved.