



MAIL TO: P.O. BOX 16347 • Louisville, KY 40256-0347
SHIP TO: 3649 Cane Run Road • Louisville, KY 40211-1961
Tel: (502) 778-2731 • 1 (800) 928-PUMP

SECTION: Z6.10.200
ZM2621
0923
Supersedes
0519

Visit our website:
zoellerengineered.com

Product information presented here reflects conditions at time of publication. Consult factory regarding discrepancies or inconsistencies.

X70 HAZARDOUS LOCATION SERIES

DIMENSIONAL DATA
CLASS I, DIVISION 1, GROUPS C & D
CLASS I, ZONE 1, GROUPS IIA & IIB
2 HP GRINDER PUMP
1.25" NPT Discharge
Floor Mounted

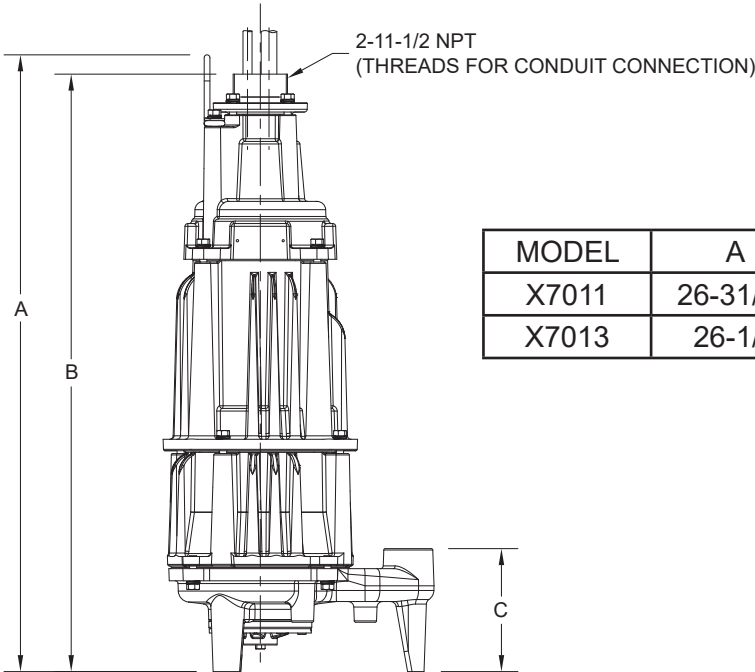
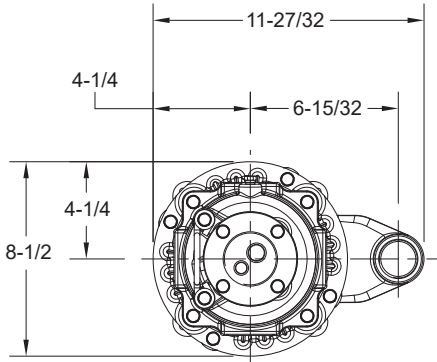


Patent No.
6,364,620



CSA
C US
Certified to CSA Standard
C22.2 No. 145

Tested to FM Standard
3600 & 3615

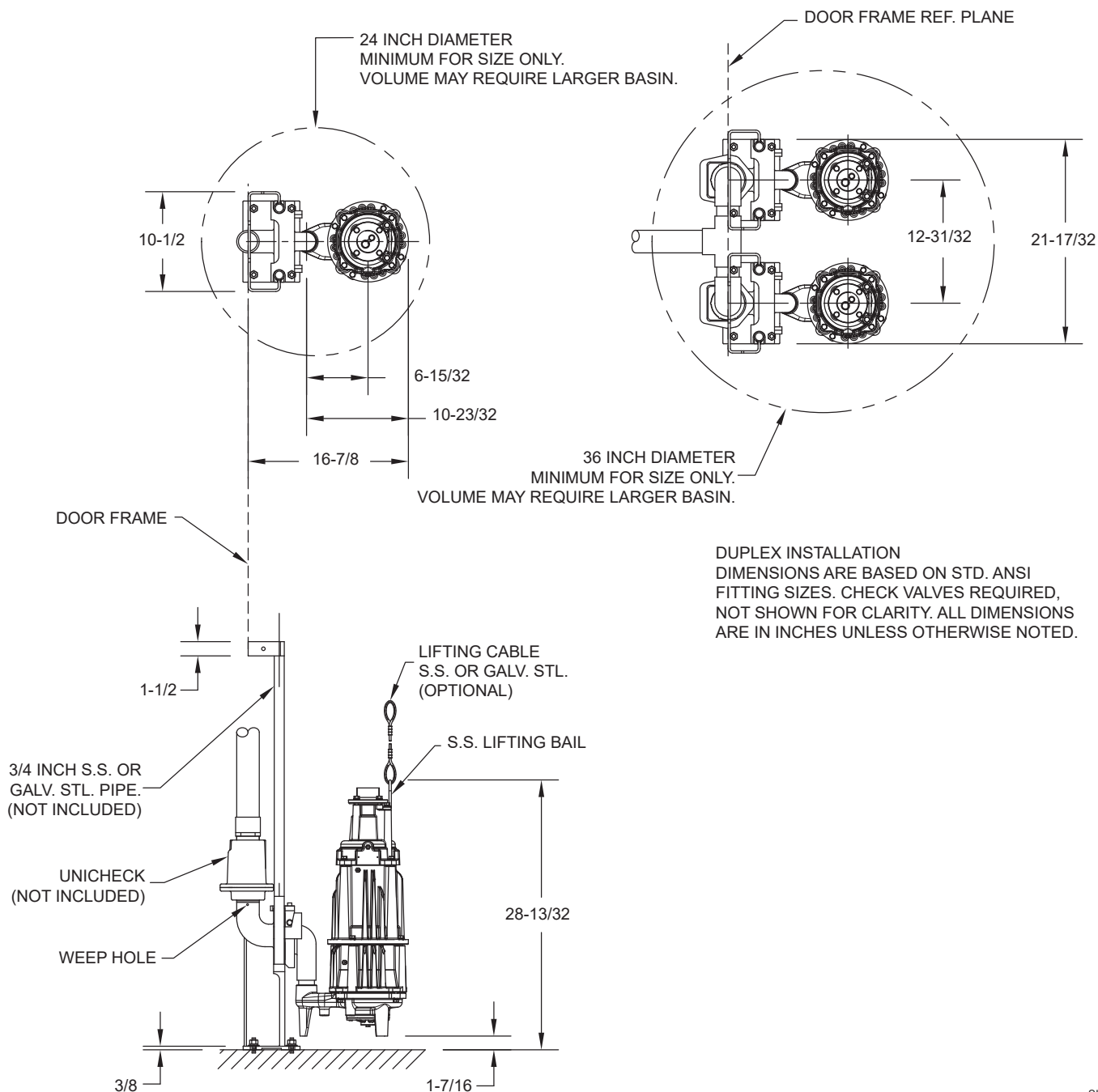


MODEL	A	B	C
X7011	26-31/32	26-1/8	5-3/8
X7013	26-1/2	25-21/32	5

X70 HAZARDOUS LOCATION SERIES

DIMENSIONAL DATA
CLASS I, DIVISION 1, GROUPS C & D
CLASS I, ZONE 1, GROUPS IIA & IIB

2 HP GRINDER PUMP
1.25" NPT x 2" NPT Discharge
P/N 39-0101 Rail System



SK2842

Zoeller Engineered Products • 3649 Cane Run Road • Louisville, Kentucky 40211-1961 • (502) 778-2731

SWPA Data Categories Presented -- Data on this sheet supply design information as the minimum recommended by the Submersible Wastewater Pump Association and is defined in accordance with SWPA's Standardized Definitions for Pump and Motor Characteristics. The accuracy of the data is the responsibility of Zoeller Engineered Products.