

Trusted. Tested. Tough.®

Product information presented here reflects conditions at time of publication. Consult factory regarding discrepancies or inconsistencies.



SECTION: Z8.00.800

ZM2282

1110

Supersedes

1004

MAIL TO: P.O. BOX 16347 • Louisville, KY 40256-0347  
SHIP TO: 3649 Cane Run Road • Louisville, KY 40211-1961  
(502) 778-2731 • 1 (800) 928-PUMP • FAX (502) 774-3624

Visit our website:  
zoellerengineered.com

## DUPLEX SYSTEM THREADED DISCHARGE PUMPS - TOP DISCHARGE

### PUMP INFORMATION

TYPE: ☐ DEWATERING

☐ GRINDER

☐ SOLIDS HANDLING

PUMP MODEL \_\_\_\_\_

\_\_\_\_\_ GPM \_\_\_\_\_ TDH

\_\_\_\_\_ DISCHARGE

\_\_\_\_\_ HP \_\_\_\_\_ RPM

\_\_\_\_\_ AMPS (FLA)

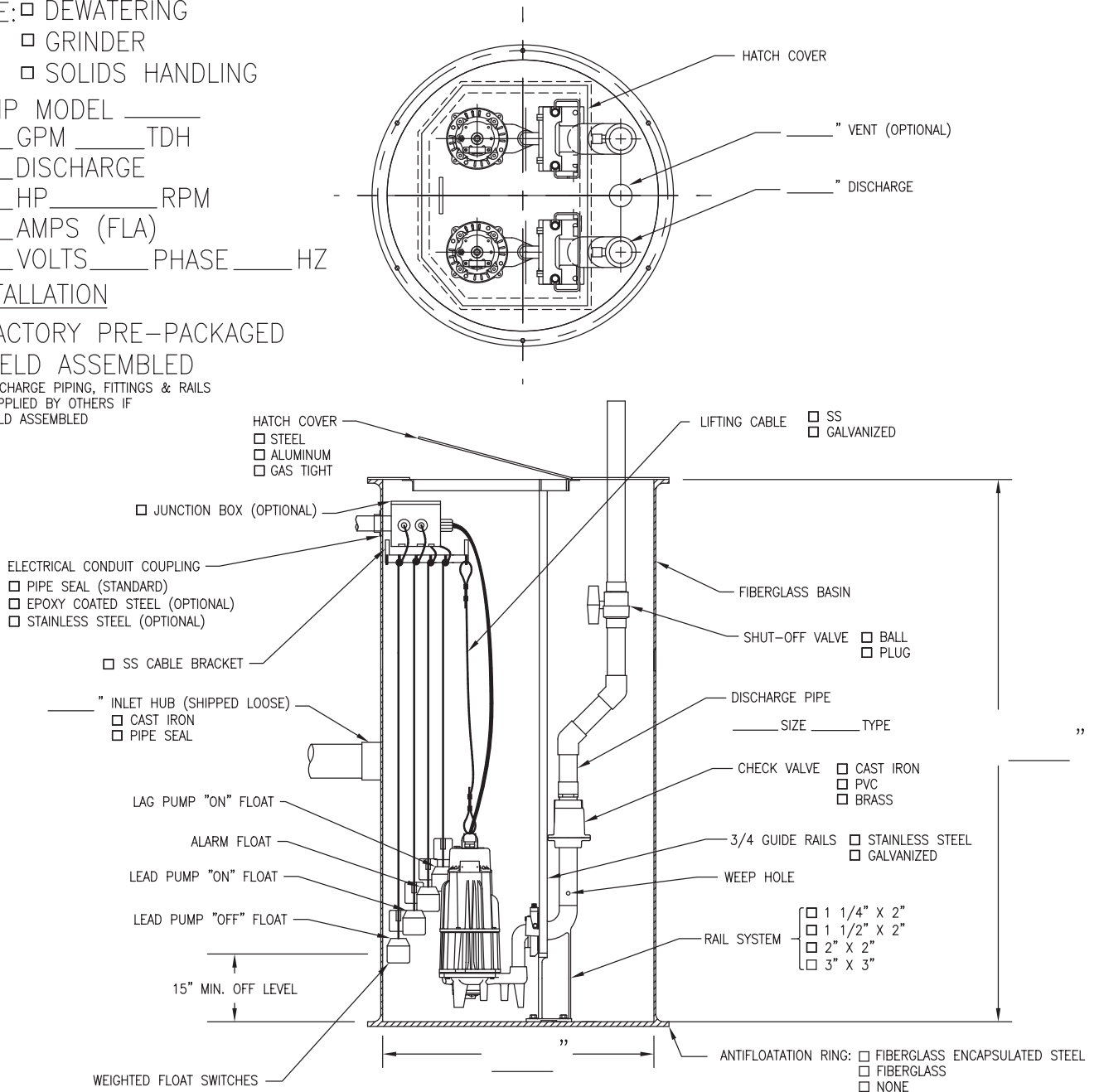
\_\_\_\_\_ VOLTS \_\_\_\_\_ PHASE \_\_\_\_\_ HZ

### INSTALLATION

☐ FACTORY PRE-PACKAGED

☐ FIELD ASSEMBLED

\* DISCHARGE PIPING, FITTINGS & RAILS  
SUPPLIED BY OTHERS IF  
FIELD ASSEMBLED



# **DUPLEX SYSTEM** **FLANGED DISCHARGE PUMPS - TOP DISCHARGE**

## PUMP INFORMATION

TYPE: ☐ DEWATERING  
       ☐ GRINDER  
       ☐ SOLIDS HANDLING

PUMP MODEL \_\_\_\_\_

\_\_\_\_\_ GPM \_\_\_\_\_ TDH

\_\_\_\_\_ DISCHARGE

\_\_\_\_\_ HP \_\_\_\_\_ RPM

\_\_\_\_\_ AMPS (FLA)

\_\_\_\_\_ VOLTS \_\_\_\_\_ PHASE \_\_\_\_\_ HZ

## PUMP INFORMATION

☐ FACTORY PRE-PACKAGED

☐ FIELD ASSEMBLED

\* DISCHARGE PIPING, FITTINGS & RAILS  
 SUPPLIED BY OTHERS IF  
 FIELD ASSEMBLED

