

Trusted. Tested. Tough.®

Product information presented here reflects conditions at time of publication. Consult factory regarding discrepancies or inconsistencies.



SECTION: Z8.00.850

ZM2281

0512

Supersedes

1004

MAIL TO: P.O. BOX 16347 • Louisville, KY 40256-0347
SHIP TO: 3649 Cane Run Road • Louisville, KY 40211-1961
(502) 778-2731 • 1 (800) 928-PUMP • FAX (502) 774-3624

Visit our website:
zoellerengineered.com

SIMPLEX SYSTEM FLANGED DISCHARGE PUMP - SIDE DISCHARGE

PUMP INFORMATION

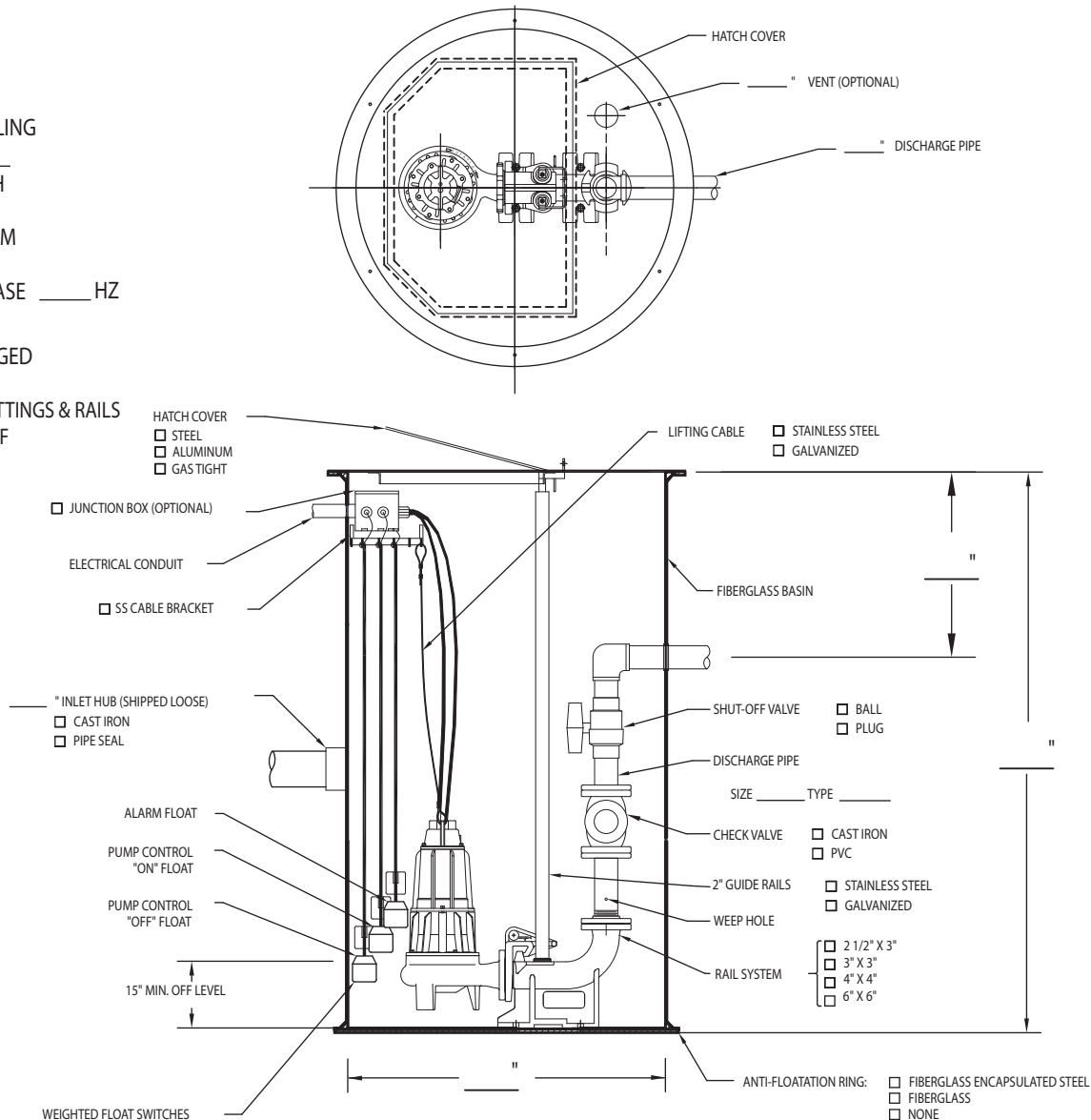
TYPE: ☐ DEWATERING
☐ GRINDER
☐ SOLIDS HANDLING

PUMP MODEL _____
_____ GPM _____ TDH
_____ DISCHARGE
_____ HP _____ RPM
_____ AMPS (FLA)
_____ VOLTS _____ PHASE _____ HZ

INSTALLATION

☐ FACTORY PRE-PACKAGED
☐ FIELD ASSEMBLED

* DISCHARGE PIPING, FITTINGS & RAILS
SUPPLIED BY OTHERS IF
FIELD ASSEMBLED



SK2426

DUPLEX SYSTEM **FLANGED DISCHARGE PUMPS - SIDE DISCHARGE**

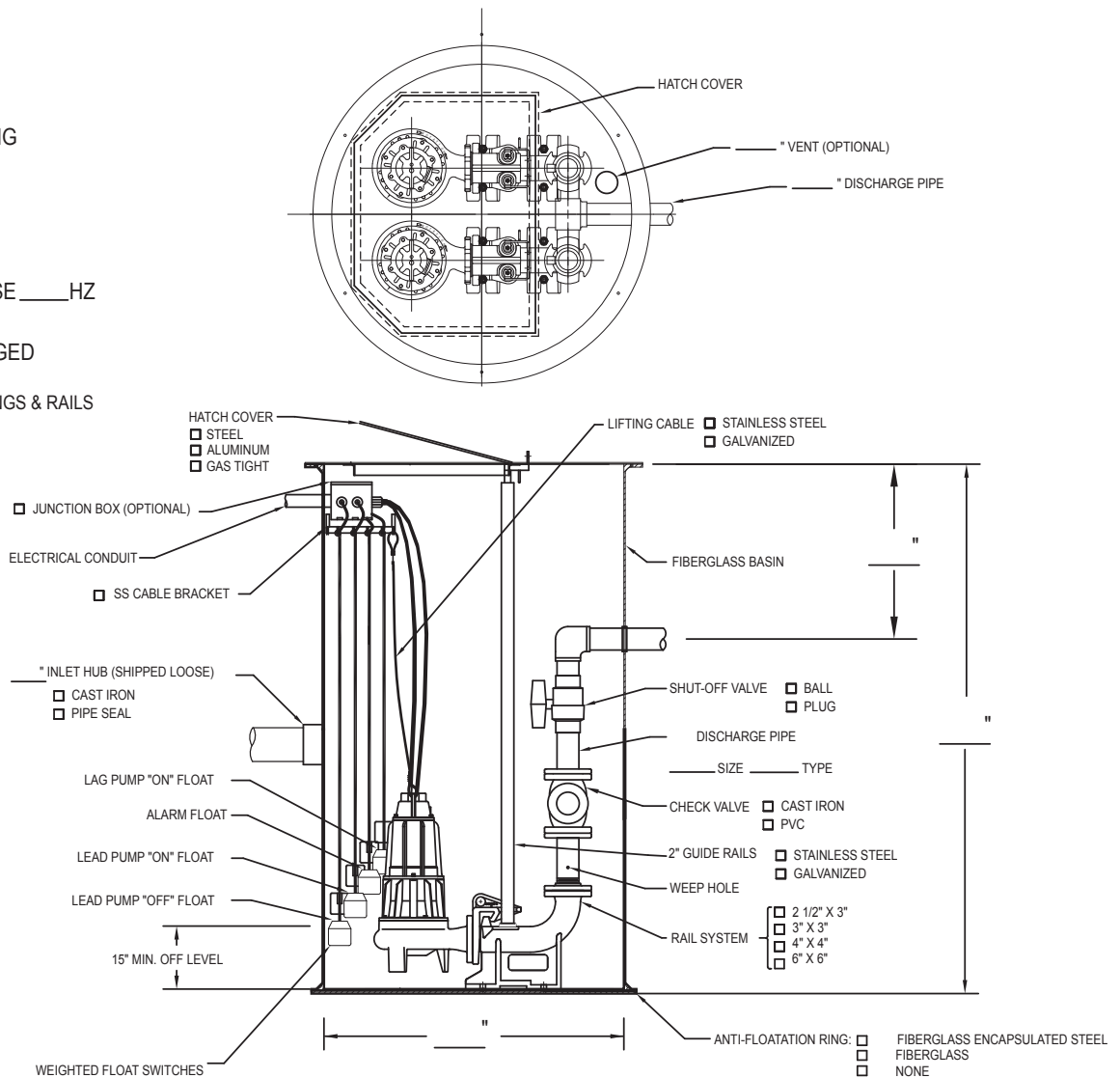
PUMP INFORMATION

TYPE ☐ DEWATERING
 ☐ GRINDER
 ☐ SOLIDS HANDLING

PUMP MODEL _____
 _____ GPM _____ TDH
 _____ DISCHARGE
 _____ HP _____ RPM
 _____ AMPS (FLA)
 _____ VOLTS _____ PHASE _____ HZ

INSTALLATION

☐ FACTORY PRE-PACKAGED
☐ FIELD ASSEMBLED
 *DISCHARGE PIPING, FITTINGS & RAILS
 SUPPLIED BY OTHERS IF
 FIELD ASSEMBLED



SK2427



MAIL TO: P.O. BOX 16347 • Louisville, KY 40256-0347
SHIP TO: 3649 Cane Run Road • Louisville, KY 40211-1961
 (502) 778-2731 • 1 (800) 928-PUMP • FAX (502) 774-3624

Trusted. Tested. Tough.®

visit our web site:
zoellerengineered.com