

Trusted. Tested. Tough.®

Product information presented here reflects conditions at time of publication. Consult factory regarding discrepancies or inconsistencies.



SECTION: Z8.00.750

ZM2280

0712

Supersedes

1004

MAIL TO: P.O. BOX 16347 • Louisville, KY 40256-0347  
SHIP TO: 3649 Cane Run Road • Louisville, KY 40211-1961  
(502) 778-2731 • 1 (800) 928-PUMP • FAX (502) 774-3624

Visit our website:  
zoellerengineered.com

## SIMPLEX SYSTEM THREADED DISCHARGE PUMP - SIDE DISCHARGE

### PUMP INFORMATION

TYPE: ☐ DEWATERING

☐ GRINDER

☐ SOLIDS HANDLING

PUMP MODEL

\_\_\_ GPM \_\_\_ TDH

\_\_\_ DISCHARGE

\_\_\_ HP \_\_\_ RPM

\_\_\_ AMPS (FLA)

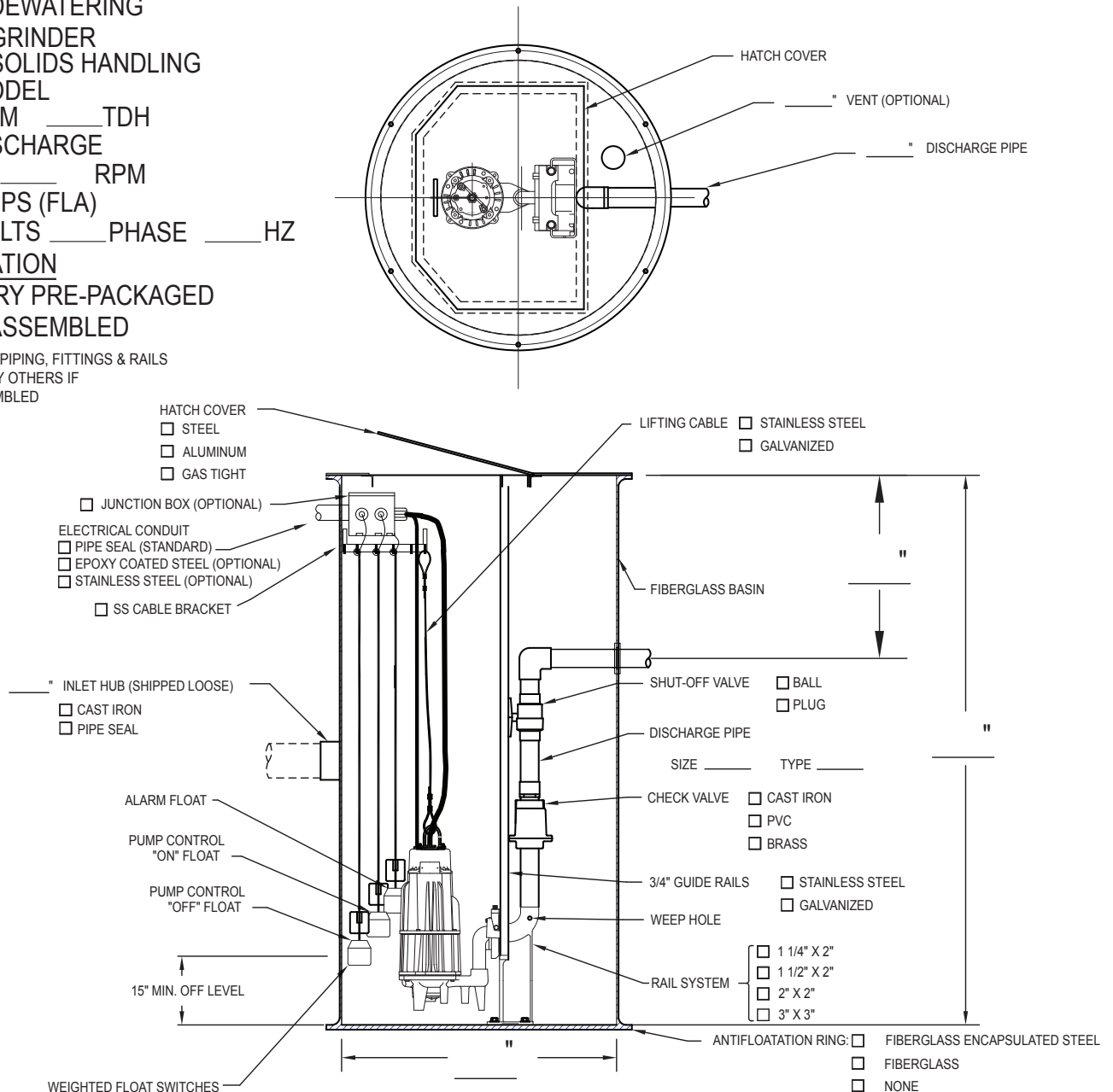
\_\_\_ VOLTS \_\_\_ PHASE \_\_\_ HZ

### INSTALLATION

☐ FACTORY PRE-PACKAGED

☐ FIELD ASSEMBLED

\* DISCHARGE PIPING, FITTINGS & RAILS  
SUPPLIED BY OTHERS IF  
FIELD ASSEMBLED



SK2424

# **DUPLEX SYSTEM** **THREADED DISCHARGE PUMPS - SIDE DISCHARGE**

## **PUMP INFORMATION**

TYPE: ☐ DEWATERING

☐ GRINDER

☐ SOLIDS HANDLING

PUMP MODEL \_\_\_\_\_

\_\_\_\_\_ GPM \_\_\_\_\_ TDH

\_\_\_\_\_ DISCHARGE

\_\_\_\_\_ HP \_\_\_\_\_ RPM

\_\_\_\_\_ AMPS (FLA)

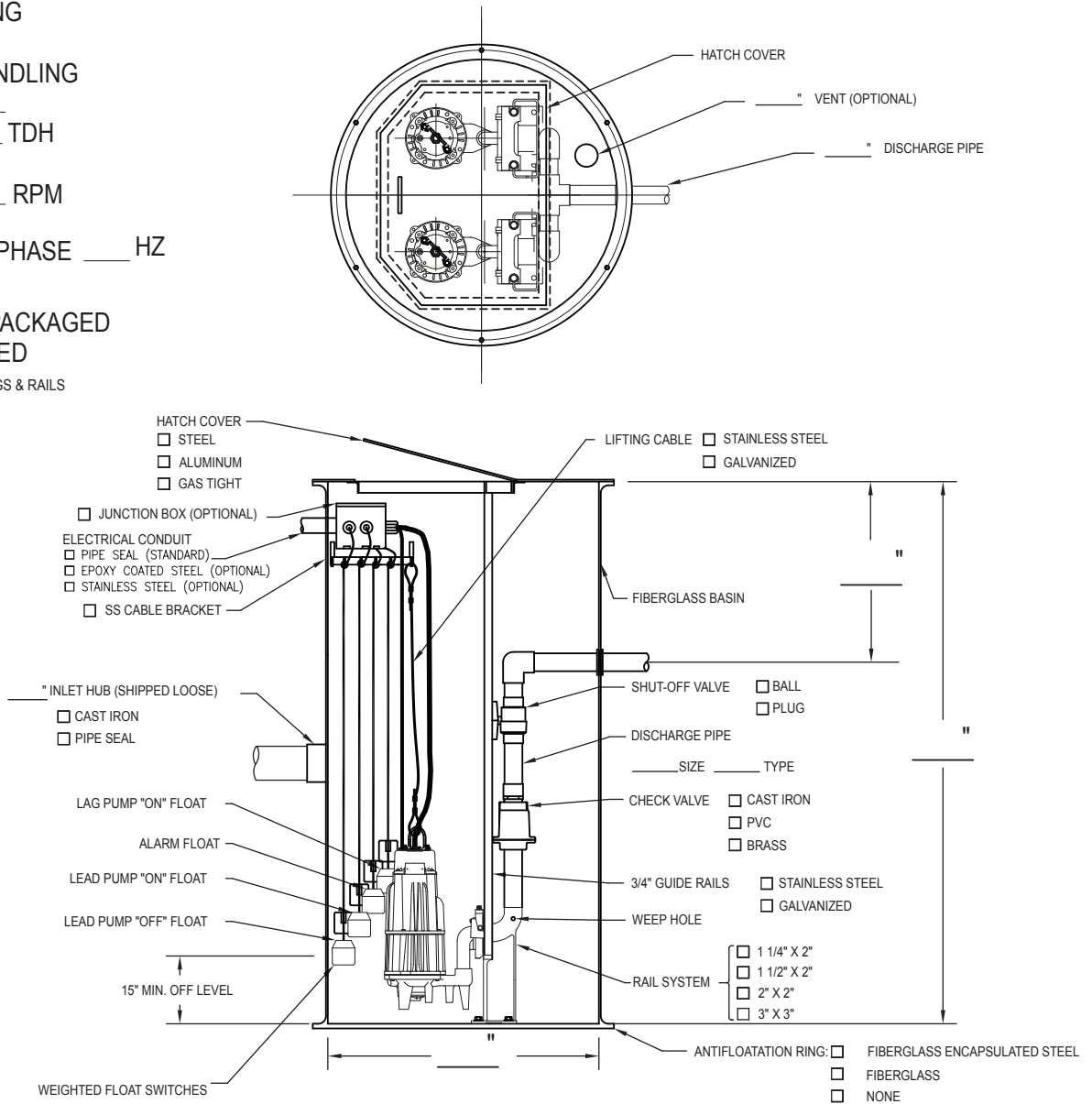
\_\_\_\_\_ VOLTS \_\_\_\_\_ PHASE \_\_\_\_\_ HZ

## **INSTALLATION**

☐ FACTORY PRE-PACKAGED

☐ FIELD ASSEMBLED

\*DISCHARGE PIPING, FITTINGS & RAILS  
SUPPLIED BY OTHERS IF  
FIELD ASSEMBLED



SK2425

**ZOELLER**   
ENGINEERED PRODUCTS

**MAIL TO:** P.O. BOX 16347 • Louisville, KY 40256-0347  
**SHIP TO:** 3649 Cane Run Road • Louisville, KY 40211-1961  
(502) 778-2731 • 1 (800) 928-PUMP • **FAX** (502) 774-3624

Trusted. Tested. Tough.®

**visit our web site:**  
**zoellerengineered.com**