

QUALITY. SERVICE. INNOVATION. INTEGRITY.

THIS IS

**ZOELLER**<sup>®</sup>  
ENGINEERED PRODUCTS



COMMERCIAL APPLICATIONS



LOW PRESSURE SEWERS



INDUSTRIAL APPLICATIONS



MUNICIPAL APPLICATIONS



## YOUR WATER SOLUTION PROVIDER

Founded in 1939 and headquartered in Louisville, Kentucky USA, Zoeller Company is one of the oldest independently-owned professional pump manufacturers in North America. Zoeller Company has established itself as a leader in pumping equipment and water treatment systems with UL, CSA, CE, and NSF certifications. The divisions of Zoeller Company employ over 800 people in North America and Asia with continuous growth in over 40 countries around the globe.

With a diverse and expanding product line, Zoeller is committed to providing engineers, architects, and designers with a wide range of options to address water-related challenges. Today, Zoeller Company consists of five distinct brands to provide solutions for wastewater, potable water, and water treatment. Our brands include Zoeller Pump Company, Zoeller Engineered Products, Clarus Environmental, Flint & Walling, and Wolf Pump.

### QUALITY.

Quality in every aspect of business is what continues to drive our decisions to provide dependable products and build solid relationships with customers.

### SERVICE.

For immediate answers and new opportunities, we offer face-to-face customer training, on-call product support, and installation support when possible.

### INNOVATION.

We are constantly adjusting and improving our processes and products to exceed our customers' expectations in the ever-changing market conditions.

### INTEGRITY.

The true measure of integrity is what one does when no one is watching. We would like to give you a glimpse of what Zoeller is capable of and how we may help you in the future.

**TRUSTED.  
TESTED.  
TOUGH.®**



## Zoeller Engineered Products Resources

---

### Building Information Modeling (BIM)

We offer three-dimensional Revit files with attached technical data for most of our pumps and accessories. These models may be dropped into your building plans for easy access to dimensions, pump performance, etc. All available files can be found on our website, and we can quickly create any new files at your request.

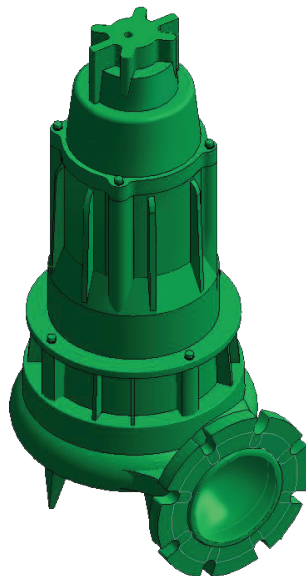
### Online Pump Selector

We offer an online pump selector program based on information the user inputs. Enter in the application's design point, gallons per minute (GPM) and total dynamic head (TDH). If the system's TDH is unknown, a calculator is available to derive that input parameter. Once a pump is selected, a pump curve and data sheets are generated. Supporting documentation such as product features, technical data, engineering specifications and guide specs can also be generated. The program also has the ability to send an electronic "Request for Quote" directly to Zoeller's sales office.

### Sales Support

We are always available by phone to walk through your application information and ensure you have selected the correct pumps and accessories to best suit your needs. Our experts will also help you understand the benefits of upgrading and customizing your products with countless options such as seal types, impeller materials and sizes, cord lengths, etc.

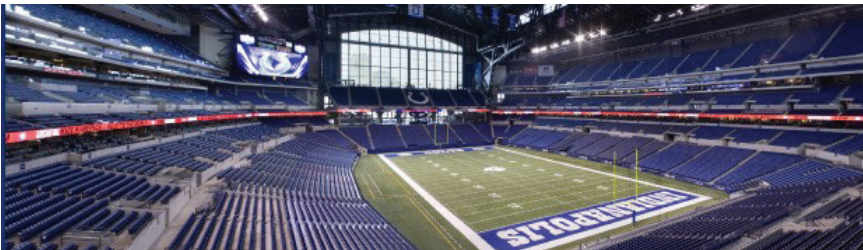
In the following pages, you will find some of the solutions provided by Zoeller products throughout the world. We hope you enjoy these success stories, and we look forward to hearing about your own!



Zoeller Engineered Products was established in 1991 and has served customers in commercial and municipal markets in sewage, wastewater and storm water removal as well as hazardous location applications. This product line offers pumps from 1/2 to 60 BHP in dewatering, sewage, and explosion-proof (60 Hz only) applications, as well as pumps from 1 to 20 HP for grinding applications. Zoeller Engineered Products is dedicated to developing the most innovative solutions to customize a pump's design, manufacture, and installation according to the customer's exact application needs. This product line's upgrade options include mechanical seals, trimmed impellers, and inverter duty motors, among many others.

## LUCAS OIL STADIUM | INDIANAPOLIS, INDIANA, USA

Lucas Oil Stadium is a multi-purpose stadium which is well-known as the home field of the Indianapolis Colts and the host stadium of Super Bowl XLIV. It has a seating capacity of 62,241 for football games and can exceed 70,000 people in its basketball configuration. Since the field is positioned below street level, wastewater from upper levels can gravity-flow to the city mains, but sewage from the lower-level restrooms must be pumped for removal. In addition to the lift stations handling wastewater, storm water lift stations were installed on each side of the field and around the stadium to quickly remove rain water in the event that the dome is open during rainfall.



Model	Description	# Units
62HD	Heavy-duty, 3" (76 mm) spherical solids-handling	10
6188	Commercial duty effluent	1

## RANDALL'S ISLAND | NEW YORK CITY | USA

Randall's Island encompasses 433 acres on the Harlem and East Rivers, between Manhattan and Queens. It is the premier destination for sports and recreation including 60 athletic fields, a golf and tennis center, and Icahn Stadium, a world-class track and field facility. It has also become a popular site for concerts, art fairs, and cultural festivals.

It is home to the New York Department of Environmental Protection's Wards Island Wastewater Treatment Plant. The island is serviced by a collection system, including numerous small pumping stations, and its 3 million annual visitors depend on the wastewater collection system and associated facilities. When it was reported that the pumps on Randall's Island were clogging on a regular basis and requiring emergency repairs, it was suggested that Zoeller Engineered Products of Louisville, KY may be able to alleviate the problem by retrofitting new pumps into the existing system.



Zoeller Engineered Products has over two decades of experience manufacturing bi-directional grinder pumps available in 2 thru 7-1/2 HP. These grinder pumps successfully handle many problematic applications that cause traditional solids-handling and grinder pumps to struggle. The design incorporates rotating blades that cut biaxially as the solids are pulled through a stationary plate, designed with a unique pattern of slots and orifices. The cutter and plate are constructed of 440C stainless steel hardened to a Rockwell HRC 58. The uniqueness of this design is not only that it cuts solids in the waste stream but also its ability to change the direction of the rotating blades with each cycle. During an operating cycle, it will cut in the clock-wise direction, then it will reverse to cut in the counter-clock-wise direction during its next operating cycle. This reversing cutting action keeps cutting surfaces clean and prevents roping of materials, which will eventually lead to a clogged pump. Another attractive feature of the Zoeller grinder is its ability to be retrofitted onto the existing rail systems and operate with the existing control panel with the Zoeller reversing control box.

Two 5 HP reversing grinder pumps and a reversing controller were purchased from Zoeller Engineered Products and installed in a Randall's Island pumping station. Positive feedback was received about the pumps' operation with no clogging occurring during the first few months. After one year of operation, Zoeller inquired about the application to ensure the products were still fulfilling the customer's expectations. It was proudly reported that the Zoeller reversing grinder pumps had not failed even once after fourteen months of operation. As anticipated, there was another satisfied user of a Zoeller reversing grinder pump who would later become a repeat customer.

Model	Description	# Units
7111	Reversing grinder pumps, 5 HP	6
10-2322	Duplex Reversing control boxes	3

## HONDA PLANT | CELAYA, GUANAJUATO, MEXICO

In 2014, Honda de México S.A. de C.V. announced it would begin building a facility measuring 5.66 million square meters in Mexico to manufacture subcompact vehicles for the North American market. As it is projected to produce 200,000 units per year and employ approximately 3,200 people, the company has installed 13 duplex grinder lift stations around the facility to accommodate all discharged wastewater from the plant. Each lift station contains two Zoeller grinder pumps, which will provide high flow and superior biaxial cutting action to handle the harsh environment of the manufacturing building. The pumps are also installed on Zoeller's Z-Rail® disconnect systems, allowing for easy disconnect and removal for regular maintenance and inspection.



Model	Description	# Units
G7013	2 HP, high-flow grinder pumps	26
Z-Rail®	Zoeller rail system	26

## BRISAS DEL LAGO | PANAMA CITY, PANAMA



Brisas del Lago is a gated community with approximately 225 residential homes. Since the community is responsible for its own water and waste, all wastewater from the homes is discharged to the community's wastewater treatment plant, which utilizes a Zoeller model 6295 in the first stage and a model 61 HD in the second stage of the process. In addition, Flint & Walling, a division of Zoeller Company, supplied 4" submersible well pumps to supply potable water to each home..

Model	Description	# Units
6295	1/2 HP commercial duty sewage pump	1
61 HD	Heavy-duty solids-handling pump	1
4" submersible	Well pump for potable water	2

## NEVADA COUNTY FAIRGROUNDS | GRASS VALLEY, CA USA

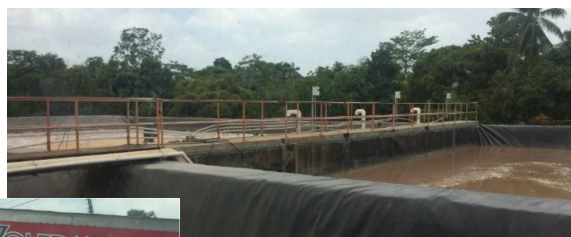
When it became necessary to expand the Nevada County Fairgrounds, the county developed a duplex pump system to handle the job. Two heavy-duty solids-handling pumps from Zoeller Engineered Products were installed on 4" rail systems built at Zoeller's Louisville manufacturing facility. The control panel was custom-built for the project by Tulsar Controls, a division of Zoeller Company.



Model	Description	# Units
61 HD	Heavy-duty solids-handling	2
10-3875	Tulsar duplex control panel	1

## PRODUCTOS TOLEDANO, S.A. | PANAMA

Productos Toledano, S.A. is a major producer of chicken products in Panama. Toledano manages the entire process from incubating the eggs and raising the chickens to processing the meat and delivering the final products to commercial establishments. In a processing facility outside of Panama City, Toledano utilizes its own wastewater treatment plant for all factory by-product. The wastewater is discharged to two simplex pumping stations where 62 HD Series pumps assist with the first step of primary treatment in the system.



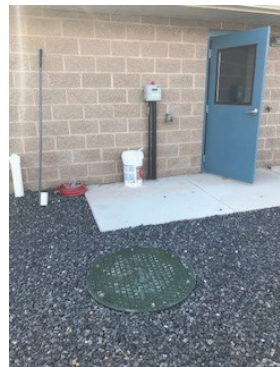
Model	Description	# Units
62 HD	Heavy-duty, 3" (76 mm) spherical solids-handling	2

# ZEP® LPS

## Low Pressure Sewer Systems

### KELLY CROSSROADS PRESSURE SEWER PROJECT. PENNSYLVANIA, USA

49 units (7021) progressing cavity grinder pumps were installed. The basins are 24" X 84" fiberglass with Z Rail® guide system



### HOWARD COUNTY, MARYLAND, USA

40 units (E7020) have been installed with more replacements each year.





## SAINT JOHN'S PROPERTIES | MARYLAND, USA

This project was developed to replace failing septics, collect wastewater and deliver to the local WWTP. 30 duplex grinder pump packages were installed, using a combination of 1HP and 2HP Zoeller progressing cavity grinder pumps. Based on the location of the basin, the configuration was either a prepackaged fiberglass basin or a concrete basin with H2O covers. The unique design feature was the ability to use Z Rail® for ease of installation and removal of pumps when requiring service. Zoeller Engineered Products was selected based on ease of service and interchangeable pumps between fiberglass and concrete basins. All stainless piping, valves and guiderails.

**DUPLEX FIBERGLASS ALTERNATING  
PROGRESSNG CAVITY GRINDER PUMPS**



**DUPLEX ALTERNATING PANEL WITH  
BUILT-IN SCADA**



**CONCRETE BASIN WITH H2O COVER**



## MORE LPS JOBS

### **KINCAID CROSSING, MISSOURI, USA**

Pressure sewer system in Columbia, MO involving approximately 25 units (progressing cavity pumps) installed in 2016.

### **CAPTAIN'S COVE COMMUNITY, VIRGINIA, USA**

The buildout of 2 HP progressing cavity pump packages into Accomack County, Virginia began in 2016. The systems serve a mix of new homes and existing ones converted from septic systems. To date, 135 units have been sold/installed into the community.

### **COMPASS POINTE, LEELAND, NORTH CAROLINA, USA**

Approximately 200 pump systems (Model 7020s) have been installed into this thriving golf course development since 2015.

### **TOWN OF BRONSON, FLORIDA, USA**

Approximately 30 pumps (Model 7021) were installed as duplex lift stations for a private, commercial pressure sewer application beginning in the fall of 2014.

### **LOC SUBSTATION, EDDYSTONE, PENNSYLVANIA, USA**

Simplex Progressing Cavity Grinder Pump Station. Poly basin complete with LPS Panel.

### **BRONSON WASTEWATER SYSTEM, REDDICK, FLORIDA, USA**

This residential subdivision project. 15 duplex systems (E7021) have been installed.

### **WEST DUNBAR SANITARY, WEST VIRGINIA, USA**

Simplex Progressing Cavity Grinder Pump Station. Poly basin complete with LPS Panel. Pump is mounted on Z Rail®.

### **TPA DIXIE, MARYLAND, USA**

Converted customer from a competitor progressing cavity system into our 7011 reversing grinder pumps. Completed the project with a new panel and basin assembly.

### **CITY OF HONOLULU, HAWAII, USA**

4 simplex replacement systems (6932-0038) installed for 1 year testing. After one year, contract for 500 units annually awarded. Installations occurring as competitor's systems fail.

# *Notes*

# *Notes*

ZM3008  
0122  
Supersedes  
0519



**3649 Cane Run Road • Louisville, KY 40211-1961 USA**  
**+1-502-778-2731 | 1-800-928-7867 | [zoellerengineered.com](http://zoellerengineered.com)**

