

Trusted. Tested. Tough.®



MAIL TO: P.O. BOX 16347 • Louisville, KY 40256-0347
SHIP TO: 3649 Cane Run Road • Louisville, KY 40211-1961
Tel: (502) 778-2731 • 1 (800) 928-PUMP

SECTION: Z3.10.250

ZM3409

0923

Supersedes

0622

Visit our website:
zoellerengineered.com

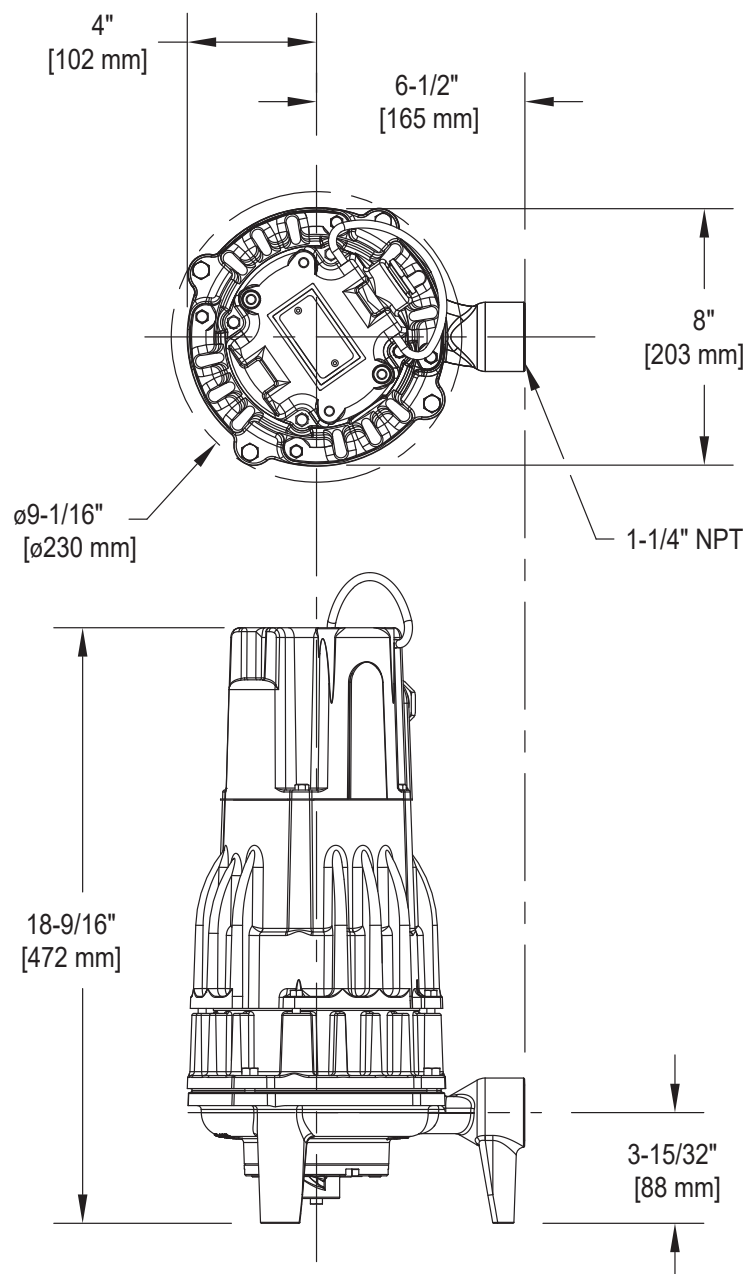
Product information presented here reflects conditions at time of publication. Consult factory regarding discrepancies or inconsistencies.



GRINDER PUMP

DIMENSIONAL DATA

1-1/4" Horizontal Discharge Units
Floor Mounted
Models: 7008 & 7010



SK3352

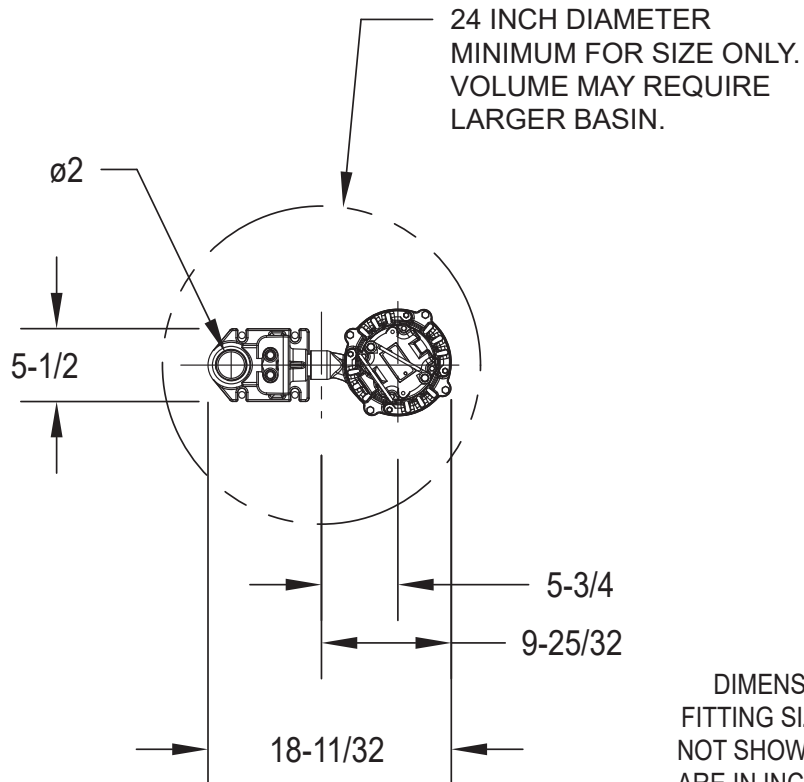
70 SERIES MODELS 7008 & 7010

DIMENSIONAL DATA

1 - 2 HP Grinder pump- single Seal

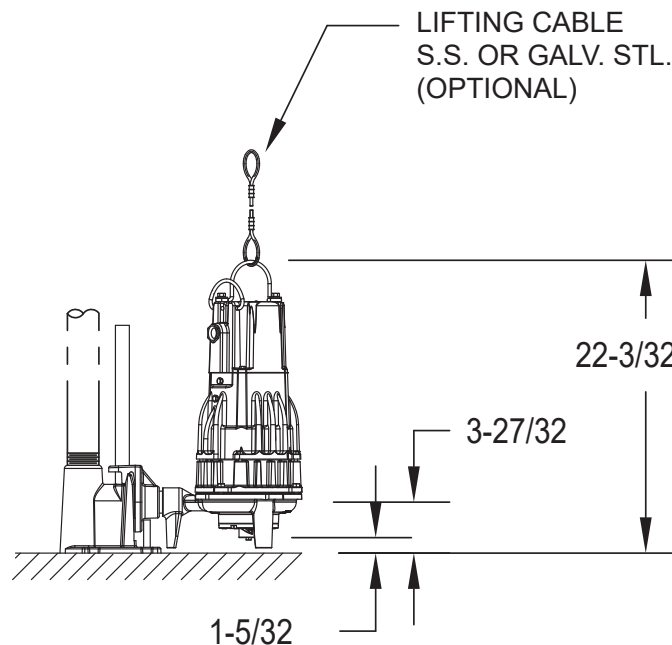
1.25" Flygt Rail Adapter - 39-0183

Flygt Adapter 39-0183



DIMENSIONS ARE BASED ON STD. ANSI
FITTING SIZES. CHECK VALVES REQUIRED,
NOT SHOWN FOR CLARITY. ALL DIMENSIONS
ARE IN INCHES UNLESS OTHERWISE NOTED.

SIMPLEX INSTALLATION



SK3356

Note: For other competitor adapters
consult factory

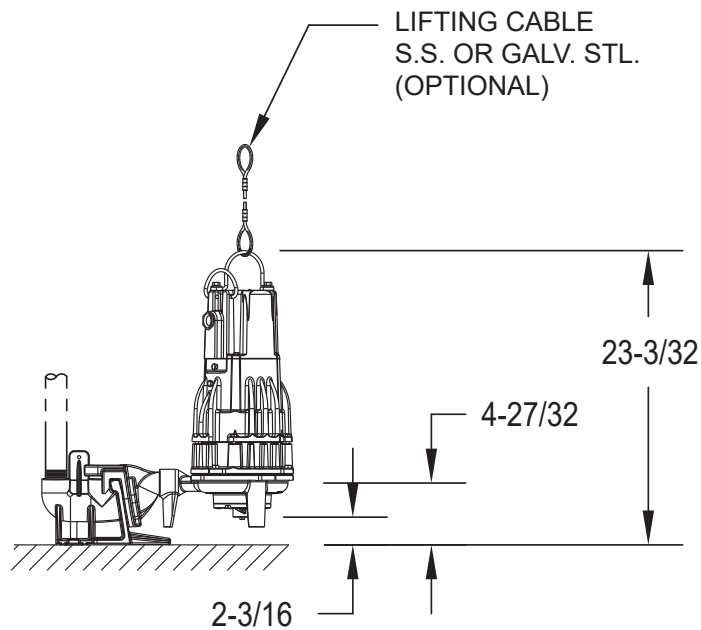
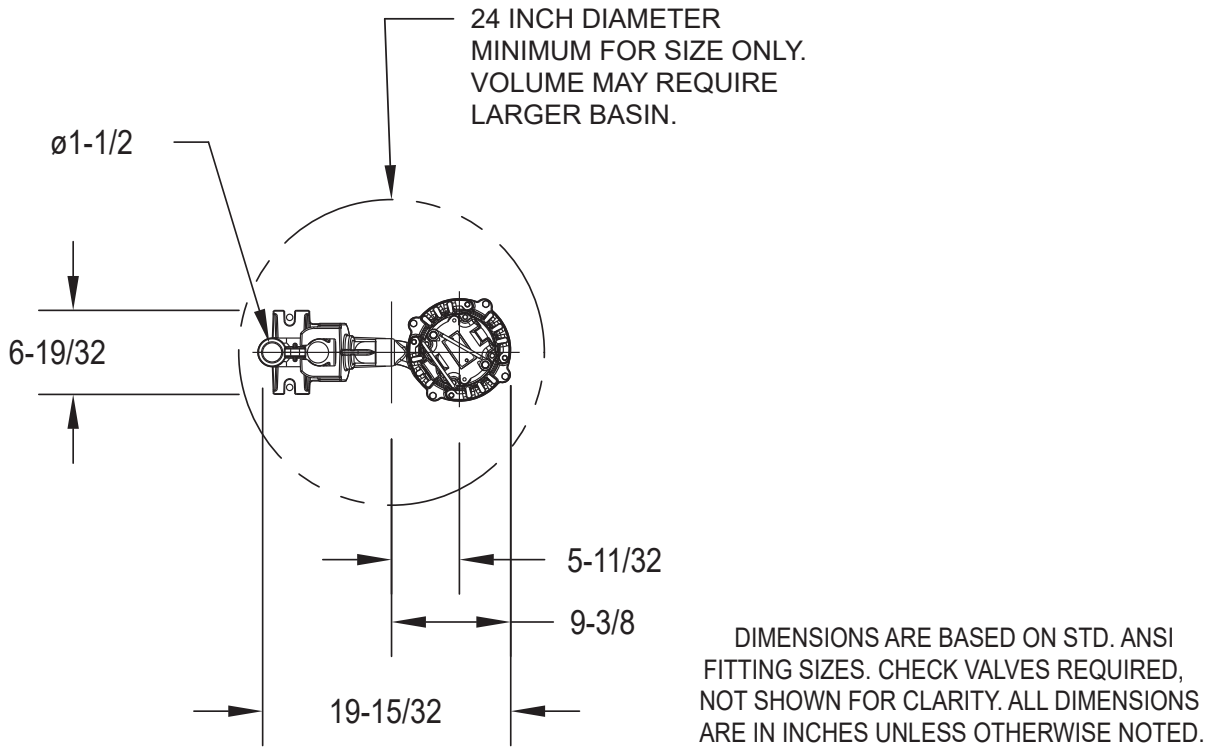
70 SERIES MODELS 7008 & 7010

DIMENSIONAL DATA

1 - 2 HP Grinder pump- single Seal

1.25" Liberty Rail Adapter - 39-0182

Liberty Adapter - 39-0182

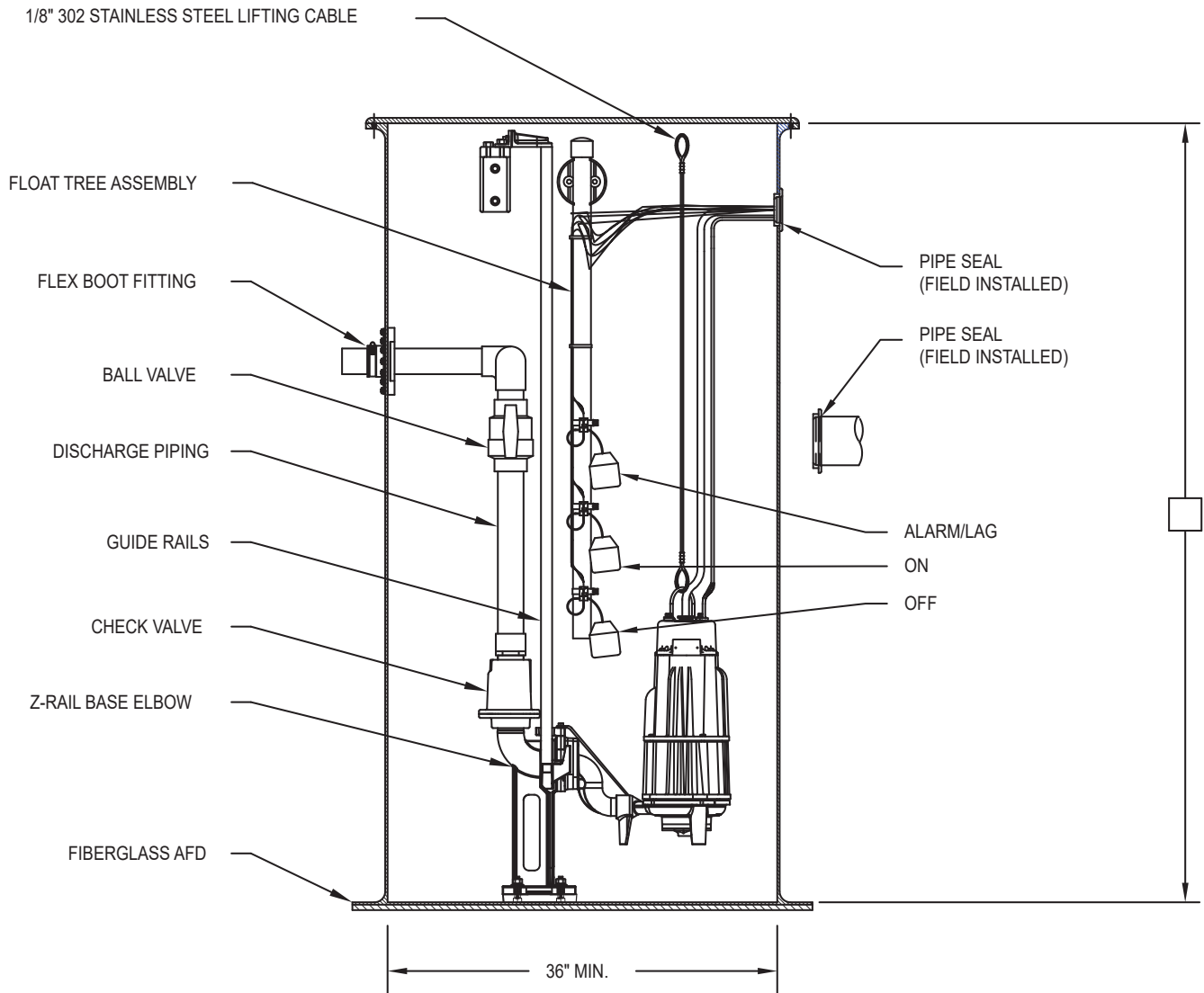


Note: For other competitor adapters
consult factory

Liberty is a trademark of Liberty Pumps

SK3357

Zoeller Z-Rail Assembly - 39-0137 & 39-0138



SK3355



MAIL TO: P.O. BOX 16347 • Louisville, KY 40256-0347
SHIP TO: 3649 Cane Run Road • Louisville, KY 40211-1961
Tel: (502) 778-2731 • 1 (800) 928-PUMP

Trusted. Tested. Tough.®

Visit our website:
zoellerpumps.com