

Trusted. Tested. Tough.®

Product information presented here reflects conditions at time of publication. Consult factory regarding discrepancies or inconsistencies.



SECTION: Z4.30.060

ZM2621

0519

Supersedes

0211

MAIL TO: P.O. BOX 16347 • Louisville, KY 40256-0347
SHIP TO: 3649 Cane Run Road • Louisville, KY 40211-1961
 (502) 778-2731 • 1 (800) 928-PUMP • **FAX** (502) 774-3624

visit our web site:
zoellerengineered.com

X70 HAZARDOUS LOCATION SERIES

DIMENSIONAL DATA

CLASS I, DIVISION 1, GROUPS C & D

CLASS I, ZONE 1, GROUPS IIA & IIB

2 HP GRINDER PUMP

1.25" NPT Discharge

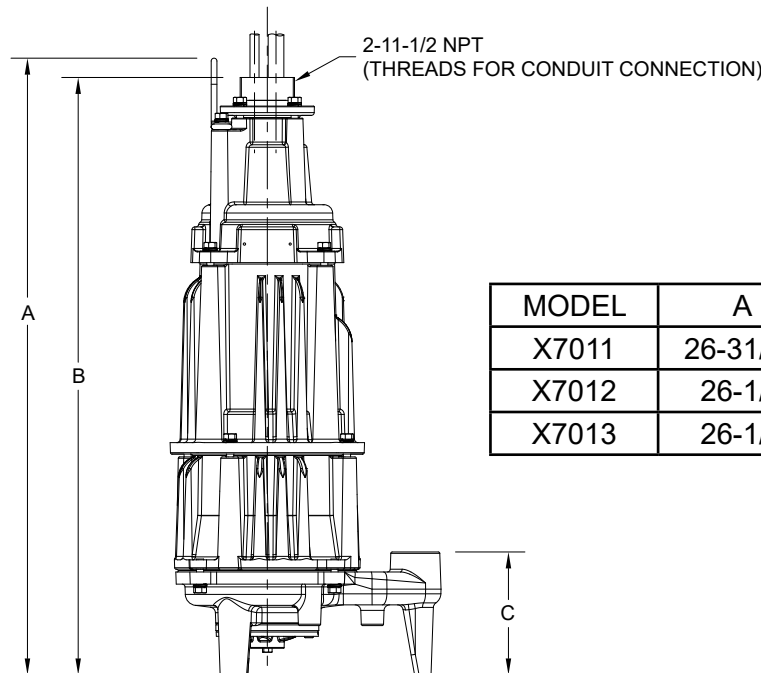
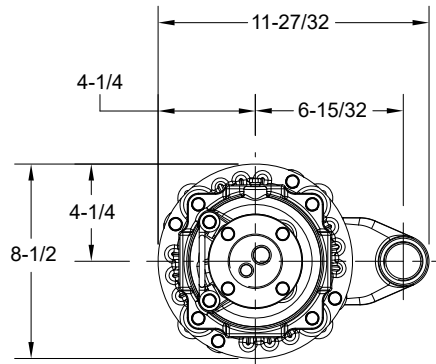
Floor Mounted



Patent No.
6,364,620



Tested to FM Standard
3600 & 3615



MODEL	A	B	C
X7011	26-31/32	26-1/8	5-3/8
X7012	26-1/2	25-21/32	5
X7013	26-1/2	25-21/32	5

X70 HAZARDOUS LOCATION SERIES

DIMENSIONAL DATA

CLASS I, DIVISION 1, GROUPS C & D

CLASS I, ZONE 1, GROUPS IIA & IIB

2 HP GRINDER PUMP

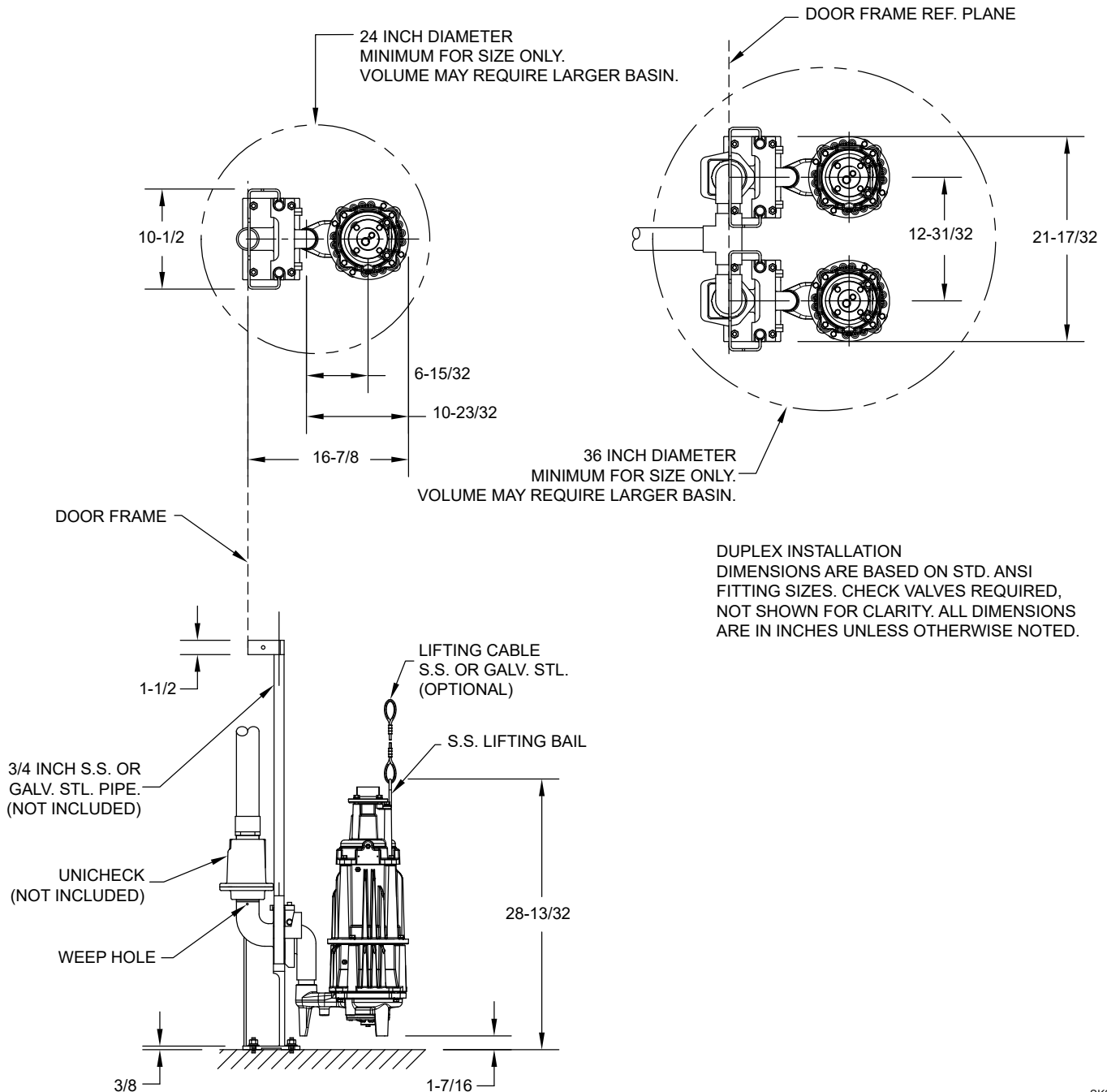
1.25" NPT x 2" NPT Discharge

P/N 39-0101 Rail System



Certified to CSA Standard
C22.2 No. 145

Tested to FM Standard
3600 & 3615



SK2842

Zoeller Engineered Products • 3649 Cane Run Road • Louisville, Kentucky 40211-1961 • (502) 778-2731

SWPA Data Categories Presented -- Data on this sheet supply design information as the minimum recommended by the Submersible Wastewater Pump Association and is defined in accordance with SWPA's Standardized Definitions for Pump and Motor Characteristics. The accuracy of the data is the responsibility of Zoeller Engineered Products.