

Trusted. Tested. Tough.™

Product information presented here reflects conditions at time of publication. Consult factory regarding discrepancies or inconsistencies.



SECTION: Z2.20.150

ZM2312

0712

Supersedes

0309/2

MAIL TO: P.O. BOX 16347 • Louisville, KY 40256-0347
SHIP TO: 3649 Cane Run Road • Louisville, KY 40211-1961
 (502) 778-2731 • 1 (800) 928-PUMP • **FAX** (502) 774-3624

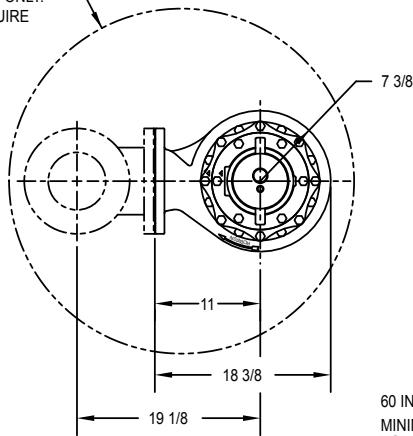
visit our web site:
zoellerengineered.com



**62 HD SERIES
 DIMENSIONAL DATA
 6" Flanged Discharge Units
 Floor Mounted
 Models: 6220 - 6224**

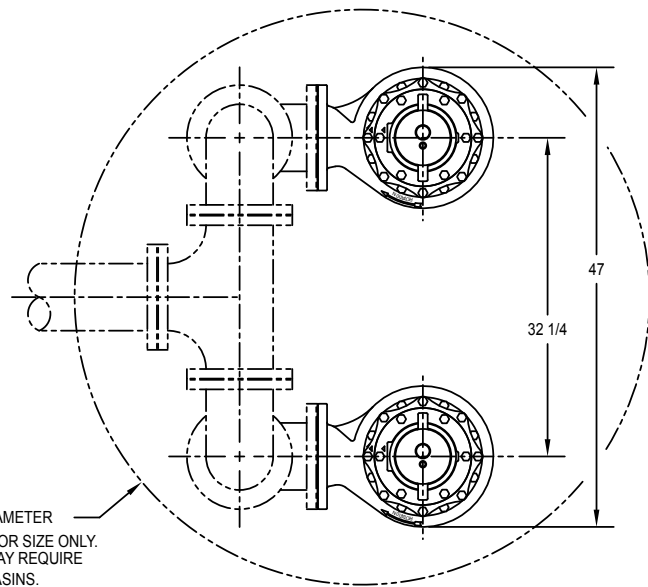


36 INCH DIAMETER
 MINIMUM FOR SIZE ONLY.
 VOLUME MAY REQUIRE
 LARGER BASINS.



SIMPLEX INSTALLATION

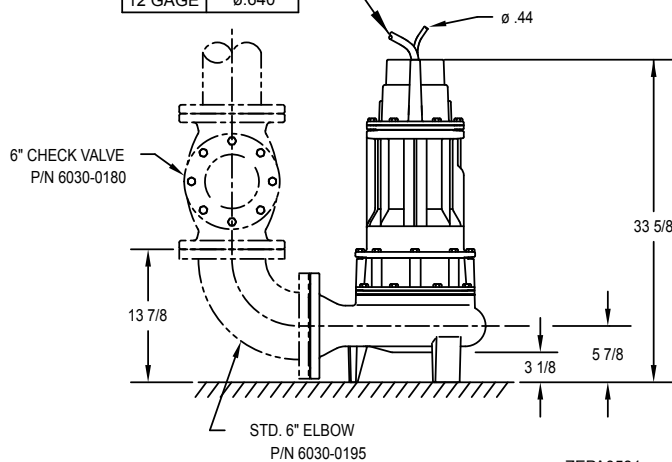
60 INCH DIAMETER
 MINIMUM FOR SIZE ONLY.
 VOLUME MAY REQUIRE
 LARGER BASINS.



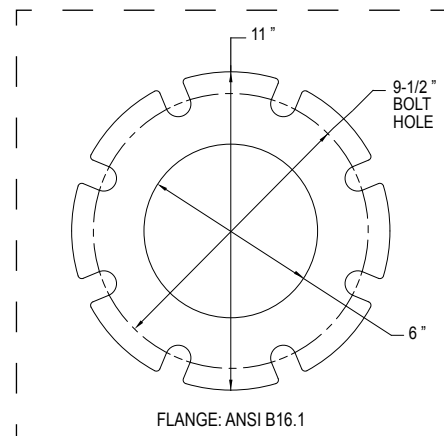
DUPLEX INSTALLATION

DIMENSIONS BASED ON STD. ANSI FITTING SIZES
 CHECK VALVES REQUIRED, NOT SHOWN FOR CLARITY

4 GAGE	ø1.350
8 GAGE	ø.930
12 GAGE	ø.640



ZEPA0581



FLANGE: ANSI B16.1

Note: All dimensions in inches unless otherwise noted.

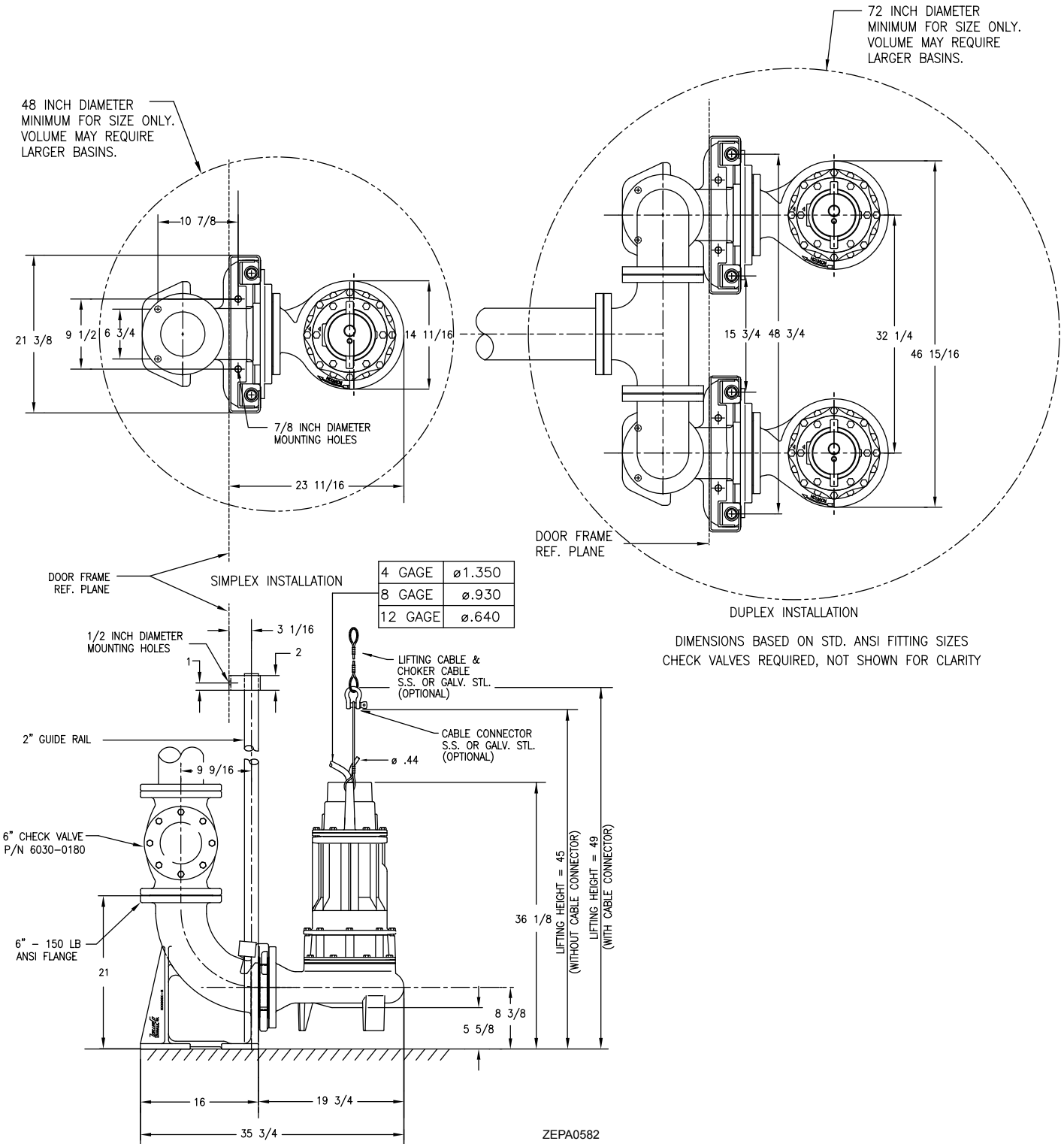
See Reverse Side for "Rail Mounted"

62 HD SERIES

DIMENSIONAL DATA

6" Flanged Discharge Units

Models: 6220 - 6224
P/N 6039-0072 Rail Mounted



NOTE: All dimensions in inches unless otherwise noted.

See Reverse Side for "Floor Mounted"