

Product information presented here reflects conditions at time of publication. Consult factory regarding discrepancies or inconsistencies.



MAIL TO: P.O. BOX 16347 • Louisville, KY 40256-0347
SHIP TO: 3649 Cane Run Road • Louisville, KY 40211-1961
 (502) 778-2731 • 1 (800) 928-PUMP • **FAX** (502) 774-3624

visit our web site:
zoellerengineered.com

SIMPLEX SYSTEM FLANGED DISCHARGE PUMP - SIDE DISCHARGE

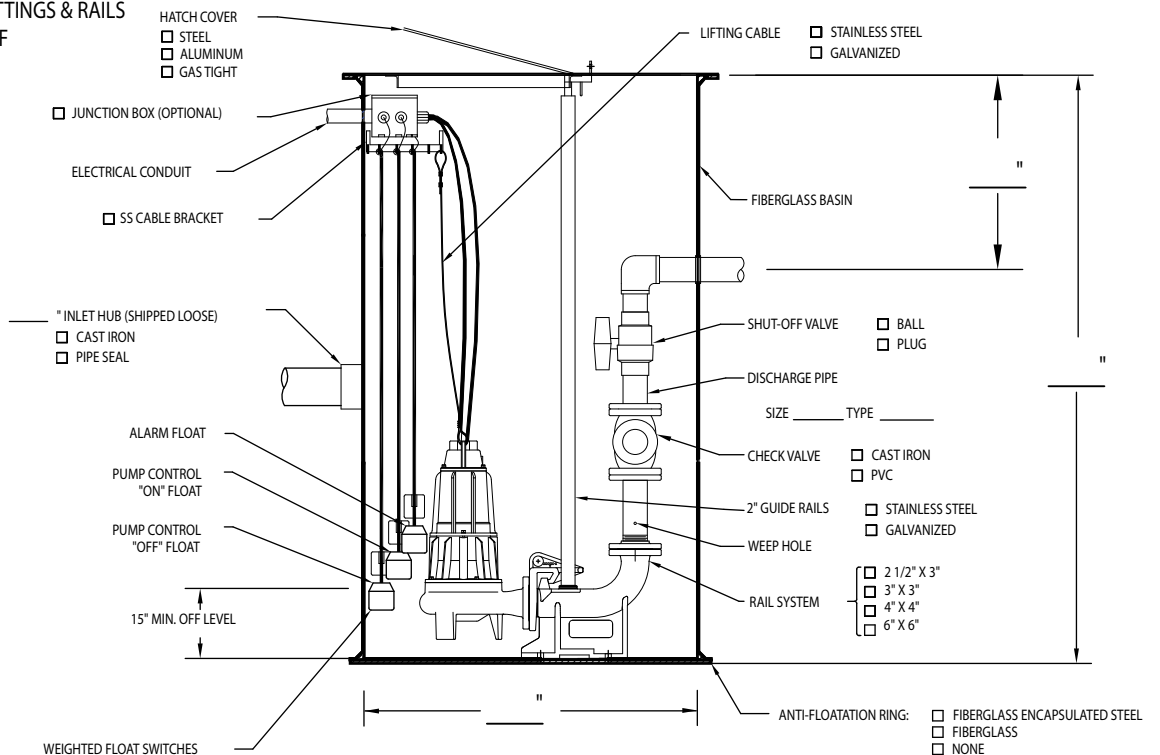
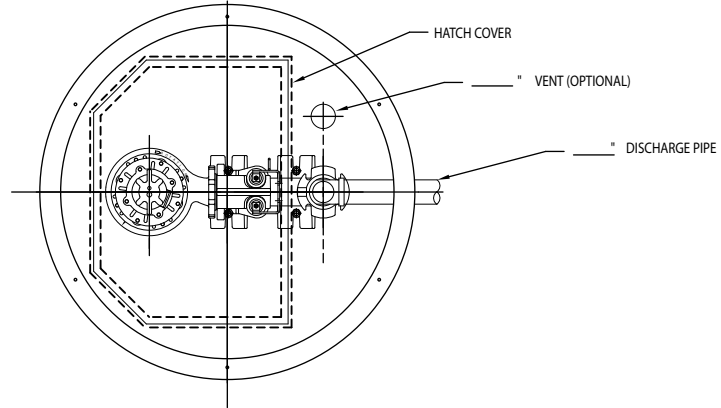
PUMP INFORMATION

- TYPE: DEWATERING
 GRINDER
 SOLIDS HANDLING

PUMP MODEL _____
 _____ GPM _____ TDH
 _____ DISCHARGE
 _____ HP _____ RPM
 _____ AMPS (FLA)
 _____ VOLTS _____ PHASE _____ HZ

INSTALLATION

- FACTORY PRE-PACKAGED
 FIELD ASSEMBLED
 * DISCHARGE PIPING, FITTINGS & RAILS
 SUPPLIED BY OTHERS IF
 FIELD ASSEMBLED



SK2426

DUPLIX SYSTEM FLANGED DISCHARGE PUMPS - SIDE DISCHARGE

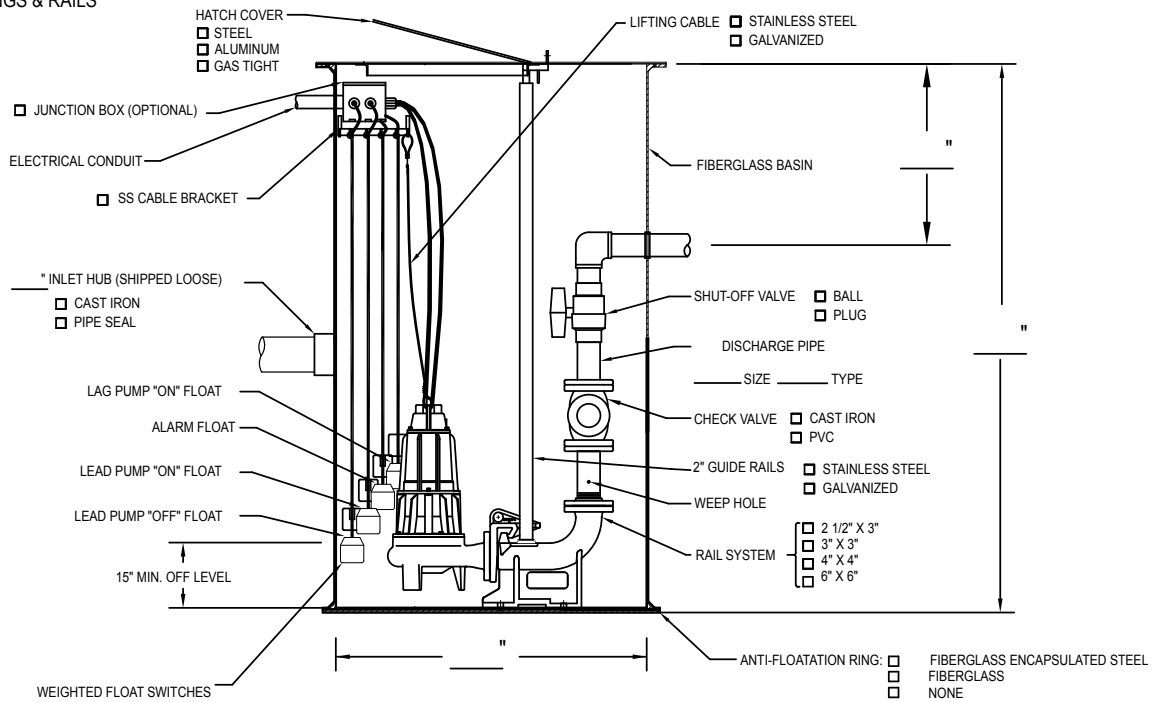
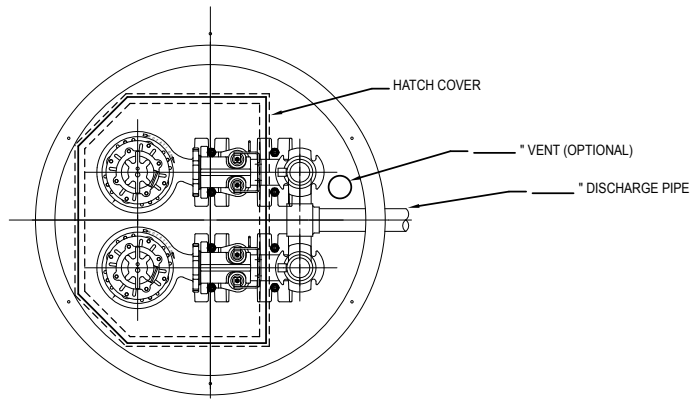
PUMP INFORMATION

- TYPE DEWATERING
 GRINDER
 SOLIDS HANDLING

PUMP MODEL _____
 _____ GPM _____ TDH
 _____ DISCHARGE
 _____ HP _____ RPM
 _____ AMPS (FLA)
 _____ VOLTS _____ PHASE _____ HZ

INSTALLATION

- FACTORY PRE-PACKAGED
 FIELD ASSEMBLED
 *DISCHARGE PIPING, FITTINGS & RAILS
 SUPPLIED BY OTHERS IF
 FIELD ASSEMBLED



SK2427



MAIL TO: P.O. BOX 16347 • Louisville, KY 40256-0347
SHIP TO: 3649 Cane Run Road • Louisville, KY 40211-1961
 (502) 778-2731 • 1 (800) 928-PUMP • FAX (502) 774-3624

Trusted. Tested. Tough.™

visit our web site:
zoellerengineered.com