

Trusted. Tested. Tough.®



SECTION: Z3.10.100

ZM1800

1220

Supersedes

0519

Product information presented here reflects conditions at time of publication. Consult factory regarding discrepancies or inconsistencies.

MAIL TO: P.O. BOX 16347 • Louisville, KY 40256-0347
SHIP TO: 3649 Cane Run Road • Louisville, KY 40211-1961
(502) 778-2731 • 1 (800) 928-PUMP • FAX (502) 774-3624

Visit our website:
zoellerengineered.com

X6160 & X6180 HAZARDOUS LOCATION SERIES

Class I, Division 1, Groups C & D Rated and Class I, Zone 1, Groups IIA & IIB Gas Areas

or

Class II, Division 1, Groups E, F & G and Zone 20 Dust Areas

PRODUCT FEATURES
Commercial Duty Effluent



APPLICATIONS



WARNING

Not for use in acidic, atmospheres.

- Industrial dewatering.
- Automotive repair facilities sumps
- Septic tank effluent
- Low pressure effluent sewers
- Quick change oil stations



MATERIAL FEATURES

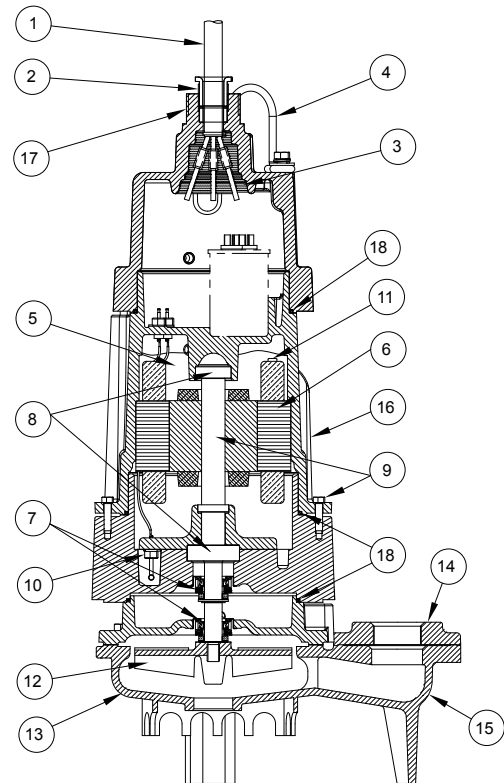
PUMP:

- Solids - 3/4"(19 mm) spherical capability
- Discharge Size - 1-1/2", 2", and 3" NPT vertical
- Construction - Cast iron ASTM A-48, Class 30, 30,000# tensile strength, protected with a corrosion resistant baked on epoxy powder coating
- Seal leak probes
- Balanced concentric pump housing and impeller
- Attaching hardware - 304 stainless steel
- Square ring seals - Viton
- Impeller - bronze vortex impeller
- Optional: Additional cord length ____ ft. (____ m)
- Silicon carbide seals
- Non-sparking rail systems



MOTOR:

- 1 Phase - 115/200/230 Volt, 3450 RPM
- 3 Phase - 200/230/460/575 Volt, 3450 RPM
- Class I, Division 1, Groups C & D and Class I, Zone 1, Groups IIA & IIB Gas areas
- Class II, Division 1, Groups E, F & G and Zone 20 Dust Areas
- Tested to FM Standards 3600 & 3615 by CSA
- Stator - Class B and F insulation and lead wires
- 416 SS motor shaft
- Oil-filled motor housing
- Finned cast iron housing for faster heat dissipation
- Integral overload protection (1-phase)
- Thermal sensors with lead wires (3-phase)
- Ball bearings - upper and lower high carbon chromium steel
- Power cable length - 25'(7.6 m)



SK1987

ENGINEERING FEATURES:

1. 25'(7.6 m) of heavy duty power cable
2. Protected cable entrance. Power & sensor leads in one cable
3. Each conductor is individually sealed to eliminate cord wicking of liquids.
4. Stainless steel lifting bracket
5. Oil-filled motor housing assures uniform heat distribution, lubricates bearings, and conducts heat for cooler running.
6. Heavy duty motor features ball bearing construction. Class B or F motor insulation
7. Dual independent seals. Upper: carbon/stationary ceramic/rotary Lower: carbon/stationary silicon carbide/rotary
8. Upper and lower high-carbon chromium steel ball bearings
9. Stainless steel shaft and hardware resists corrosion.
10. Standard: Seal leak detector probes with an external checking circuit

11. Standard: Thermal sensor protection. Three phase motors have 2 normally closed temperature sensors imbedded in windings. Single phase motors have overload protectors.
12. Balanced vortex impeller with top pump out vanes for seal protection
13. Concentric case reduces radial loading for longer bearing and seal life.
14. 1-1/2", 2" & 3" NPT vertical discharge
15. Units protected with corrosion resistant baked on epoxy powder coating.
16. Finned motor housing for superior heat dissipation
17. 1-1/2" NPT threads available for cordage protection
18. Viton square rings

For additional information on 6100 Series pumps, refer to catalog on performance data, ZM1801; dimensional data, ZM1792; guide specifications, ZM1835.

For information on additional Zoeller products refer to catalog on rail systems, ZM1347; control panels, ZM1342; float switch brackets and pump lifting cable, ZM1328; check valves and piping accessories, ZM1348.

X6160 & X6180 HAZARDOUS LOCATION SERIES

Class I, Division 1, Groups C & D Rated and Class I, Zone 1, Groups IIA & IIB Gas Areas

or

Class II, Division 1, Groups E, F & G and Zone 20 Dust Areas

TECHNICAL DATA

Commercial Duty Effluent



Certified to CSA Standard
C22.2 No. 145

Tested to FM Standard
3600 & 3615 & 3616



Tested to Standard UL
778 and Certified to CSA
Standard C22.2 no. 108



MODEL NUMBER:	<input type="checkbox"/> X6161	<input type="checkbox"/> X6163	<input type="checkbox"/> X6165	<input type="checkbox"/> X6185	<input type="checkbox"/> X6186	<input type="checkbox"/> X6188	<input type="checkbox"/> X6189
PUMP NAME PLATE HORSEPOWER: HP	.5	.5	1.0	1.0	1.5	1.5	2.0
DISCHARGE SIZE:	<input type="checkbox"/> 1-1/2" NPT		<input type="checkbox"/> 2" NPT			<input type="checkbox"/> 3" NPT	

PUMP NET WEIGHT: lbs. (kg)	125-133 lbs (57-60 kg)	SERVICE FACTOR:	1.0	
SOLID SIZE: in (mm)	3/4" (19 mm)	TANDEM SEALS:	STANDARD	
IMPELLER TYPE:	BRONZE VORTEX	MOTOR DESIGN LETTER:	NEMA B	
SQUARE RING SEALS:	VITON	CORD LENGTH: ft (m)	25' (7.6 m) <input type="checkbox"/> _____'	
MOTOR SHAFT:	416 SS	SENSOR CORD LENGTH:	INCLUDED W/ POWER CORD	
RPM:	3450			
MOTOR TYPE CSA APPROVED:	Class I Gas Area Certified Class II Dust Area Certified	STATOR AND LEAD WIRES INSULATION:	X6161 - X6185	CLASS B
	SUBMERSIBLE		X6186 - X6189	CLASS F
SURFACE TEMPERATURE CODE:	T5 (1PH) T6 (3PH)	MAXIMUM STATOR TEMPERATURE:	CLASS B	266 °F (130 °C)
			CLASS F	311 °F (155 °C)

SHAFT SEAL CONSTRUCTION:	STANDARD	CARBON/CERAMIC - UPPER CARBON/SILICON CARBIDE - LOWER
	OPTIONAL UPPER	<input type="checkbox"/> CARBON/SILICON CARBIDE <input type="checkbox"/> SILICON CARBIDE/SILICON CARBIDE
	OPTIONAL LOWER	<input type="checkbox"/> SILICON CARBIDE/SILICON CARBIDE
STANDARD SENSING DEVICES**	MOTOR THERMAL SHUTOFF	INTEGRAL OVERLOAD WITH AUTOMATIC RESET - 1 PHASE
		THERMAL SENSOR WITH LEAD WIRES - 3 PHASE
	MOISTURE DETECTION	MOISTURE SENSING PROBES WITH LEAD WIRES
MINIMUM FLUID LEVEL FOR CONTINUOUS OPERATIONS: in (m)	24" (0.6 m)	
MAXIMUM WATER TEMPERATURE:	104 °F (40 °C)	

**Requires a circuit in control panel to function.

MODEL	HP	<input type="checkbox"/> 115V/	<input type="checkbox"/> 200V/	<input type="checkbox"/> 230V/	<input type="checkbox"/> 200V/	<input type="checkbox"/> 230V/	<input type="checkbox"/> 460V/	<input type="checkbox"/> 575V/
		1PHASE	1PHASE	1PHASE	3PHASE	3PHASE	3PHASE	3PHASE
		FLA	FLA	FLA	FLA	FLA	FLA	FLA
X6161	.5	15.5	8.8	7.5	6.4	5.2	2.9	2.4
X6163	.5	15.0	8.5	7.5	6.0	4.8	2.9	2.4
X6165	1.0	N/A	12.6	10.2	7.5	7.4	3.7	3.0
X6185	1.0	N/A	11.5	9.8	7.5	7.4	3.7	3.3
X6186	1.5	N/A	17.2	13.7	10.3	9.2	4.6	N/A
X6188	1.5	N/A	16.8	14.0	10.3	8.9	4.6	3.5
X6189	2.0	N/A	20.5	17.1	13.2	11.2	6.0	5.8