

Trusted. Tested. Tough.®

Product information presented here reflects conditions at time of publication. Consult factory regarding discrepancies or inconsistencies.



SECTION: Z3.20.130

ZM1796

1119

Supersedes

1017

MAIL TO: P.O. BOX 16347 • Louisville, KY 40256-0347  
SHIP TO: 3649 Cane Run Road • Louisville, KY 40211-1961  
(502) 778-2731 • 1 (800) 928-PUMP • FAX (502) 774-3624

visit our website:  
zoellerengineered.com

## X6280 - X6290 HAZARDOUS LOCATION SERIES

CLASS I, DIVISION 1, GROUP C & D

CLASS I, ZONE 1, GROUPS IIA & IIB

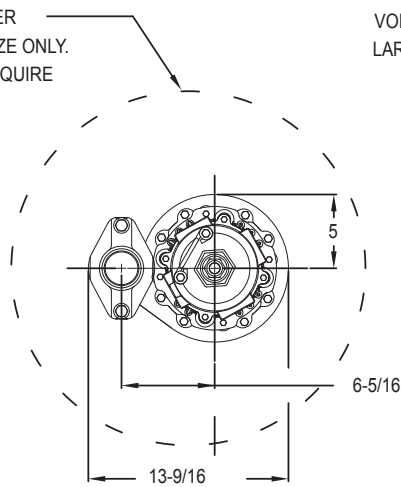
DIMENSIONAL DATA

2" & 3" NPT Vertical Discharge Units

Commercial Duty Sewage Floor Mounted

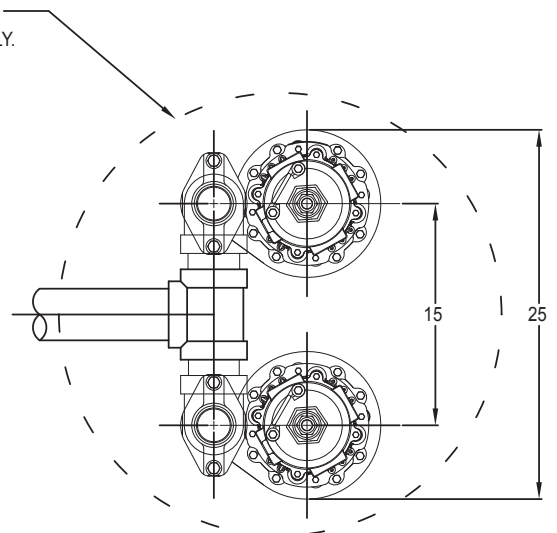


24 INCH DIAMETER  
MINIMUM FOR SIZE ONLY.  
VOLUME MAY REQUIRE  
LARGER BASIN.



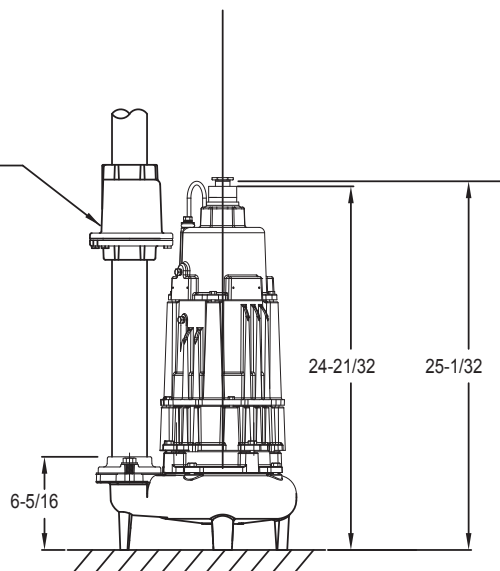
SIMPLEX INSTALLATION

30 INCH DIAMETER  
MINIMUM FOR SIZE ONLY.  
VOLUME MAY REQUIRE  
LARGER BASIN.



DUPLEX INSTALLATION

CHECK VALVE  
(P/N 30-0152 2 INCH NPT.)  
(P/N 6030-0160 3 INCH NPT.)



DIMENSIONS BASED ON STANDARD ANSI FITTING SIZES.  
CHECK VALVES REQUIRED, NOT SHOWN FOR CLARITY.  
ALL DIMENSIONS ARE IN INCHES UNLESS OTHERWISE NOTED.

\*All dimensions in inches unless otherwise noted.

# X6280 - X6290 HAZARDOUS LOCATION SERIES



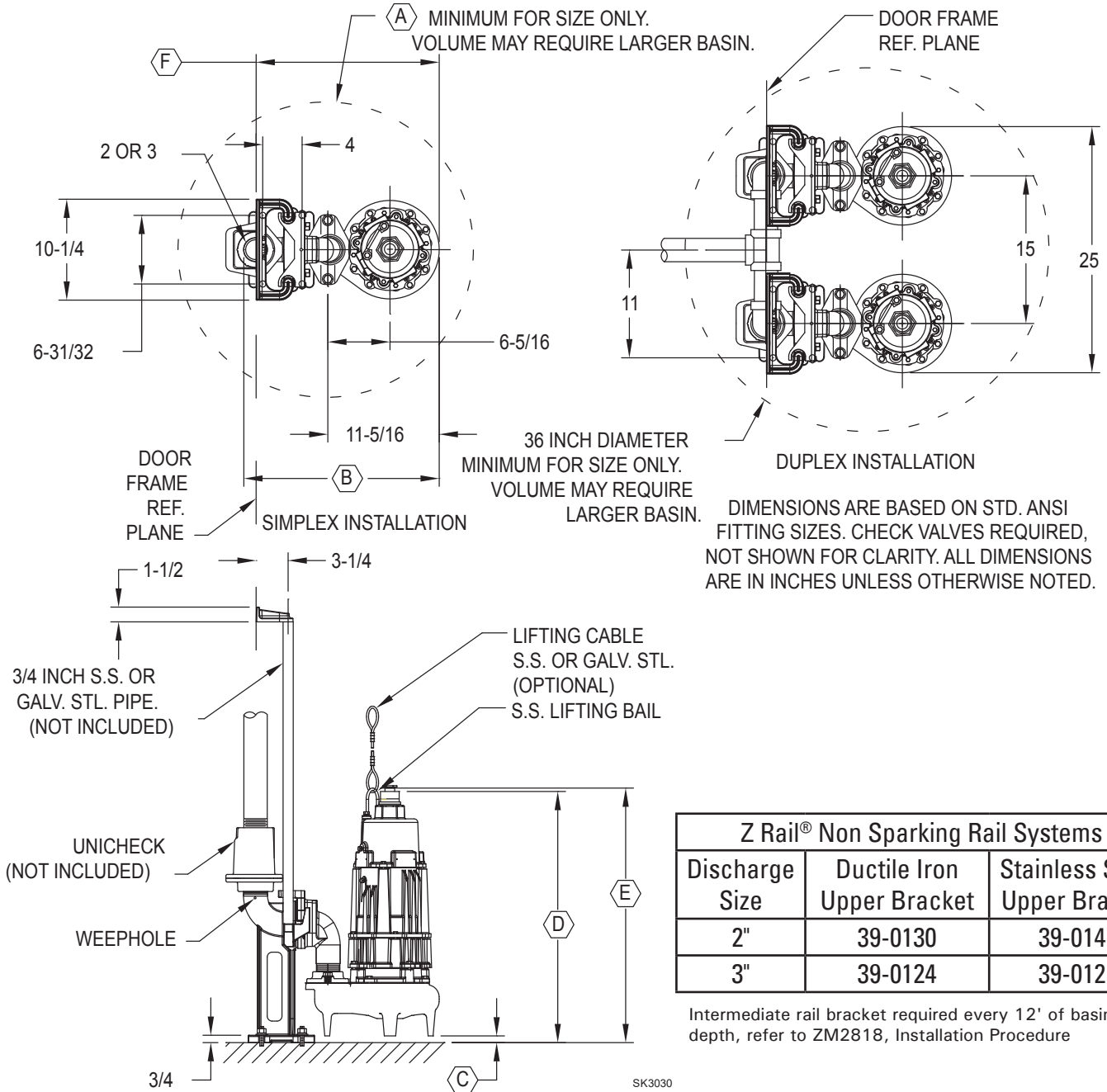
CLASS I, DIVISION 1, GROUP C & D  
CLASS I, ZONE 1, GROUPS IIA & IIB



## DIMENSIONAL DATA

2" & 3" NPT Vertical Discharge Units  
Commercial Duty Sewage Rail Mounted

DISCHARGE	A	B	C	D	E	F
2 INCH	24	19-27/32	11/16	25-1/2	25-27/32	18-19/32
3 INCH	30	21-5/8	3-5/8	28-7/32	28-17/32	19-11/16



Z Rail® Non Sparking Rail Systems		
Discharge Size	Ductile Iron Upper Bracket	Stainless Steel Upper Bracket
2"	39-0130	39-0141
3"	39-0124	39-0125

Intermediate rail bracket required every 12' of basin depth, refer to ZM2818, Installation Procedure

\*All dimensions in inches unless otherwise noted.

See Reverse Side for "Floor Mounted"