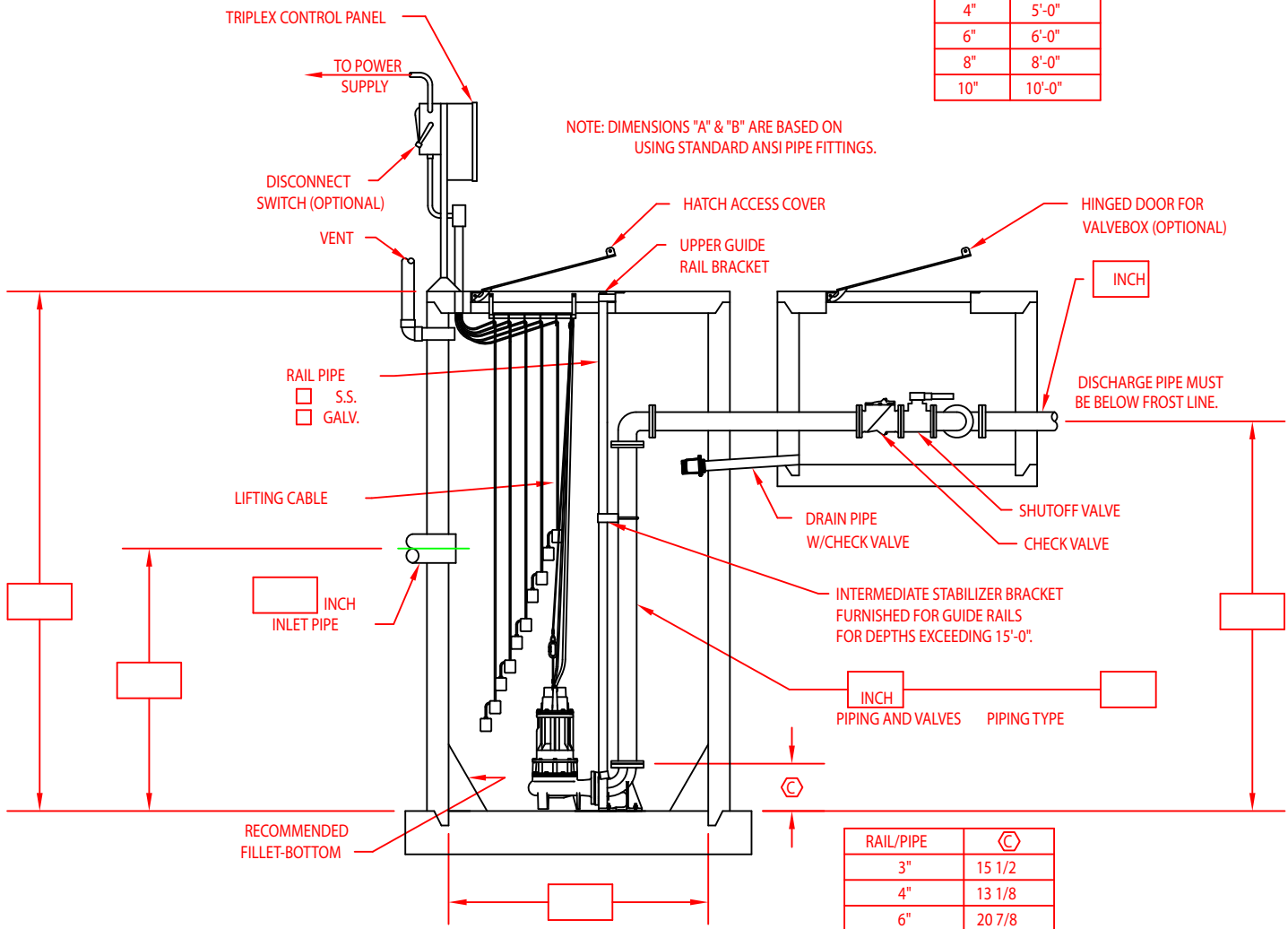


PIPING	(A)
3"	14 3/8
4"	19
6"	23 5/8
8"	26
10"	36

PIPING	(B)
3"	4'-0"
4"	5'-0"
6"	6'-0"
8"	8'-0"
10"	10'-0"

NOTE: DIMENSIONS "A" & "B" ARE BASED ON USING STANDARD ANSI PIPE FITTINGS.



RAIL/PIPE	(C)
3"	15 1/2
4"	13 1/8
6"	20 7/8
8"	24 3/8
6"X10"	19 3/4

THE INFORMATION ON THESE DRAWINGS OR WEB PAGES ARE MADE AVAILABLE FOR YOUR USE. HOWEVER, YOU USE THE INFORMATION AT YOUR OWN RISK. WE BELIEVE THE INFORMATION TO BE CORRECT AND ACCURATE AT THE TIME OF ISSUE. ZOELLER COMPANY ASSUMES NO LIABILITY, EXPRESSED OR IMPLIED, RESULTING FROM YOUR ACCESSING AND USING THIS INFORMATION. DUE TO THE CHANGES AND/OR DOWNLOAD PROBLEMS, IT IS YOUR RESPONSIBILITY AND YOU AGREE TO BE SOLELY RESPONSIBLE TO VERIFY THAT THE INFORMATION IS CORRECT AND ACCURATE FOR YOUR PURPOSES.

ZEPA0618