

Trusted. Tested. Tough.®

Product information presented here reflects conditions at time of publication. Consult factory regarding discrepancies or inconsistencies.



SECTION: Z3.20.135

ZM3383

1021

Supersedes

New

MAIL TO: P.O. BOX 16347 • Louisville, KY 40256-0347
 SHIP TO: 3649 Cane Run Road • Louisville, KY 40211-1961
 (502) 778-2731 • 1 (800) 928-PUMP • FAX (502) 774-3624

Visit our website:
 zoellerengineered.com

X6400 HAZARDOUS LOCATION SERIES

Class I, Division 1, Groups C & D Rated and Class I, Zone 1, Groups IIA & IIB Gas Areas

or

Class II, Division 1, Groups E, F & G and Zone 20 Dust Areas

TECHNICAL DATA

Commercial Duty Effluent



C_{UL} US
 Tested to UL
 Standard UL778. Certified
 to CSA
 Standard C22.2 No.108.



MODEL NUMBER:	<input type="checkbox"/> X6404	<input type="checkbox"/> X6405
PUMP NAME:	2.0	3.0
PUMP NAME PLATE HORSEPOWER: HP	4" FLANGED HORIZONTAL	
DISCHARGE SIZE:	CAST IRON VORTEX	

PUMP NET WEIGHT: lbs (kg)	176 IBS	MOTOR TYPE CSA APPROVED:	SUBMERSIBLE Class 1 Gas Area Certified Class 2 Dust Area Certified
SERVICE FACTOR:	1.0	TYPE SOW POWER CORD LENGTH: ft (m)	25' (7.62m) <input type="checkbox"/> _____
MOTOR DESIGN LETTER:	NEMA B	MOTOR SHAFT:	416 S.S.
IMPELLER TYPE:	BRONZE VORTEX	STATOR INSULATION:	CLASS B
O-RINGS AND COVER GASKET:	VITON	LEAD WIRES INSULATION:	CLASS B
RPM:	3450	MAXIMUM STATOR TEMPERATURE:	CLASS B 266 °F (130 °C)
SURFACE TEMPERATURE CODE:	T5 (1PH) T6 (3PH)		

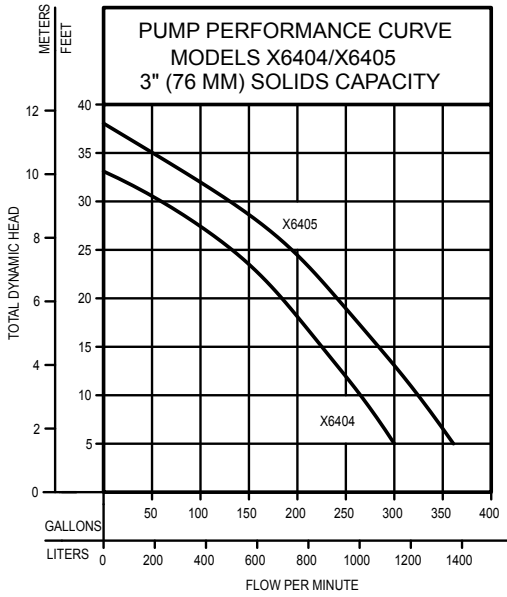
SHAFT SEAL CONSTRUCTION:	STANDARD	UPPER- CARBON/CERAMIC, LOWER - SILICON CARBIDE/CARBON
	OPTIONAL UPPER	<input type="checkbox"/> CARBON/SILICON CARBIDE <input type="checkbox"/> SILICON CARBIDE/SILICON CARBIDE
	OPTIONAL LOWER	<input type="checkbox"/> SILICON CARBIDE/SILICON CARBIDE
STANDARD SENSING DEVICES*	MOTOR THERMAL SHUTOFF	INTEGRAL OVERLOAD WITH AUTOMATIC RESET - 1 PHASE
		THERMAL SENSOR WITH LEAD WIRES - 3 PHASE
	MOISTURE DETECTION	MOISTURE SENSING PROBES WITH LEAD WIRES
MINIMUM FLUID LEVEL FOR CONTINUOUS OPERATIONS: in (m)	24" (0.6 m)	
MAXIMUM WATER TEMPERATURE:	104 °F (40 °C)	

*Requires a circuit in control panel to function.

ELECTRICAL DATA

MODEL	HP	<input type="checkbox"/> 200V/1Ph		<input type="checkbox"/> 230V/1Ph		<input type="checkbox"/> 200V/3Ph		<input type="checkbox"/> 230V/3Ph		<input type="checkbox"/> 460V/3Ph		<input type="checkbox"/> 575V/3Ph	
		FLA	LRA	FLA	LRA	FLA	LRA	FLA	LRA	FLA	LRA	FLA	LRA
<input type="checkbox"/> X6404	2	14.4	49.5	12.9	44.0	13.8	46.0	10.5	42.0	5.2	21.0	4.1	17.9
<input type="checkbox"/> X6405	3	20.2	49.5	19.0	44.0	14.8	46.0	12.2	39.5	6.1	21.0	4.8	17.9

Refer to reverse side for Head/Capacity Performance Curves



TOTAL DYNAMIC HEAD/FLOW PER MINUTE SEWAGE AND DEWATERING

MODEL		X6404		X6405	
Feet	Meters	Gal.	Liters	Gal.	Liters
5	1.5	300	1136	361	1367
10	3.0	265	1003	326	1234
15	4.6	224	848	284	1075
20	6.1	184	698	241	912
25	7.6	134	503	197	746
30	9.1	60	227	134	507
35	10.7	--	--	50	189
Shut-off Head:		33 ft.(10.1 m)		38 ft.(11.6 m)	

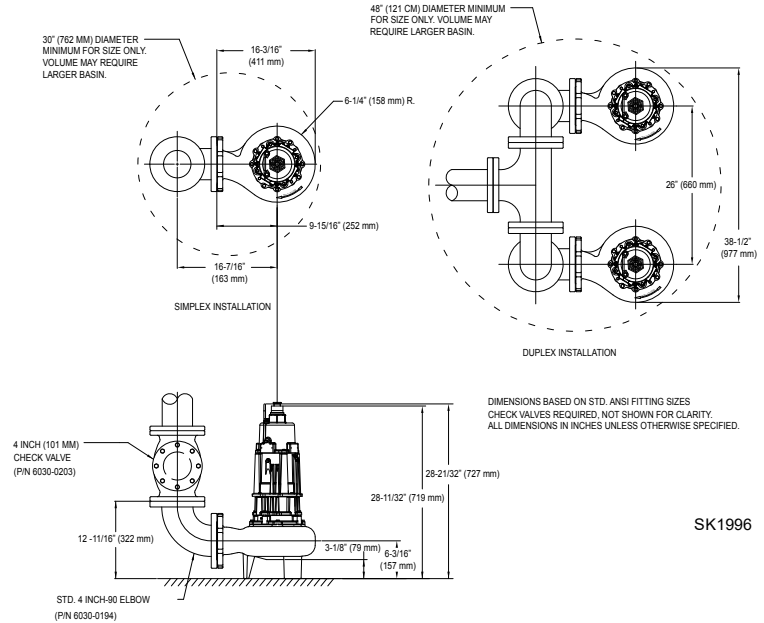
012116

Standard all models - 25 ft. cord - 2 HP

X6404 MODELS	Control Selection			Listings
	Volts	Ph	Amps	cCSAus
EX6404	230	1	12.9	Yes
IX6404	200	1	14.4	Yes
JX6404	200	3	13.8	Yes
FX6404	230	3	10.5	Yes
GX6404	460	3	5.2	Yes
BAX6404	575	3	4.1	Yes

Standard all models - 25 ft. cord - 3 HP

X6405 MODELS	Control Selection			Listings
	Volts	Ph	Amps	cCSAus
EX6405	230	1	19.0	Yes
IX6405	200	1	20.2	Yes
JX6405	200	3	14.8	Yes
FX6405	230	3	12.2	Yes
GX6405	460	3	6.1	Yes
BAX6405	575	3	4.8	Yes



SK1996

FEATURES

- Durable epoxy coated cast iron construction
- Motor - 1/2 HP or 1 HP, 60 Hz, 1750 RPM, 1 PH or 3 PH, oil filled, hermetically sealed.
- Thermal sensor with lead wire (3PH), integral overload with automatic reset (1 PH)
- Bearings - upper and lower ball bearings
- Stainless steel motor shaft
- Dual mechanical shaft seals - upper carbon/ceramic, lower silicon carbide/carbon. Optional seal materials available
- Viton O-ring seals and cover gasket
- Impeller - non-clogging bronze vortex design passes 3/4" spherical solids
- 25 foot listed 3 wire neoprene cord and plug. Longer cords available in lengths of 35-50 feet
- No screens to clog
- Stainless steel screws, bolts and handle
- 1-1/2" NPT discharge with 2" or 3" flange available
- Corrosion resistant powder coated epoxy finish
- Moisture sensors available for early warning of seal failure.
- 100% computerized tested

CAUTION

All installation of controls, protection devices and wiring should be done by a qualified licensed electrician. All electrical and safety codes should be followed including the most recent National Electric Code (NEC) and the Occupational Safety and Health Act (OSHA).