

Trusted. Tested. Tough.®

Product information presented here reflects conditions at time of publication. Consult factory regarding discrepancies or inconsistencies.



SECTION: Z1.20.120

ZM3363

0921

Supersedes

New

MAIL TO: P.O. BOX 16347 • Louisville, KY 40256-0347
SHIP TO: 3649 Cane Run Road • Louisville, KY 40211-1961
(502) 778-2731 • 1 (800) 928-PUMP • FAX (502) 774-3624

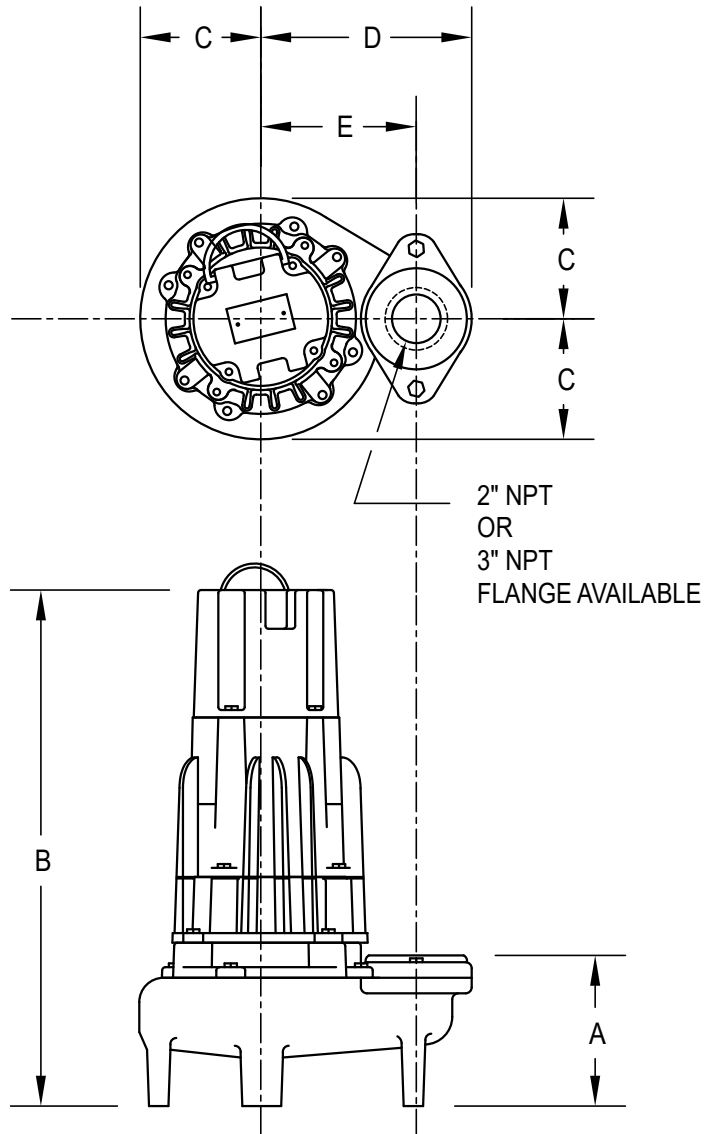
Visit our website:
zoellerengineered.com



6280 & 6290 SERIES COMMERCIAL SEWAGE PUMP

DIMENSIONAL DATA

Floor Mounted



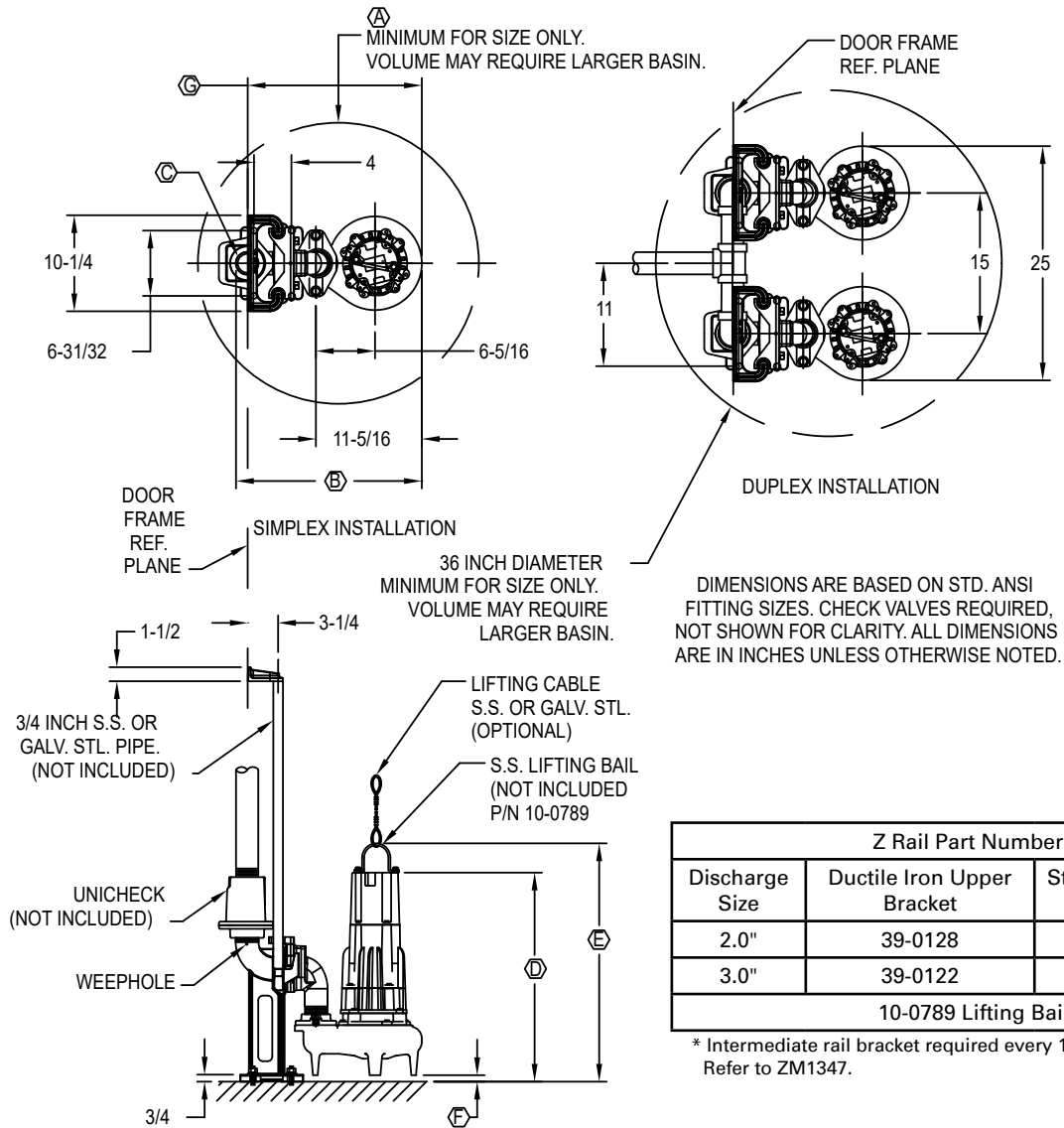
MODEL	A	B	C	D	E
6280	6-1/4" [159 mm]	21-7/16" [545 mm]	5" [127 mm]	8-9/16" [217 mm]	6-5/16" [160 mm]
6290	6" [152 mm]	21-3/16" [538 mm]	4-1/8" [105 mm]	8-3/4" [222 mm]	6-1/2" [165 mm]

SK3340

6280 & 6290 SERIES COMMERCIAL SEWAGE PUMP

DIMENSIONAL DATA 2" & 3" Rail Mounted Z-Rail® Disconnect System

DISCHARGE	A	B	C	D	E	F	G
2 INCH	24	19-27/32	2	22-5/16	25-7/16	11/16	18-19/32
3 INCH	30	22-9/16	3	25-3/16	28-5/16	3-5/16	19-11/16



SK2975

*See ZM1374 (6280) and ZM1375 (6290) for listed models.