

Trusted. Tested. Tough.®

Product information presented here reflects conditions at time of publication. Consult factory regarding discrepancies or inconsistencies.



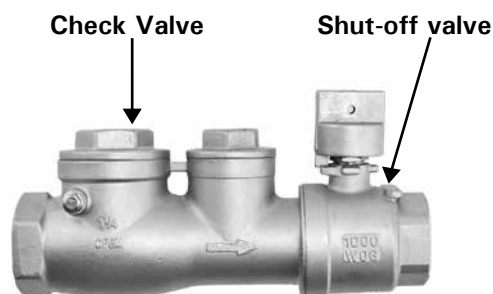
SECTION:Z5.00.205  
ZM3191  
0921  
Supersedes  
1020

MAIL TO: P.O. BOX 16347 • Louisville, KY 40256-0347  
SHIP TO: 3649 Cane Run Road • Louisville, KY 40211-1961  
(502) 778-2731 • 1 (800) 928-PUMP • FAX (502) 774-3624

Visit our website:  
[zoellerengineered.com](http://zoellerengineered.com)



## Accessories for LPS Systems (Low Pressure Sewers)



### Curb Valve Assembly #10-4698 - 1.25" #10-4893 - 2"

- Lateral valve assembly installed at the entrance of each pressure sewer site
- Includes a 316 SS curb stop valve and check valve
- Curb stop valve used to isolate site from pressure sewer
- Check valve provides redundant protection against potentially harmful backflows
- 1.25" or 2" NPT connection for use with HDPE and PVC pressure sewer pipe and fittings (Adapters included)
- Rated up to 200 psi service pressure
- Designed for use with an optional curb box and valve extension rod

### Curb Box #10-4875 (30" to 42") #10-4867 (42" to 60")

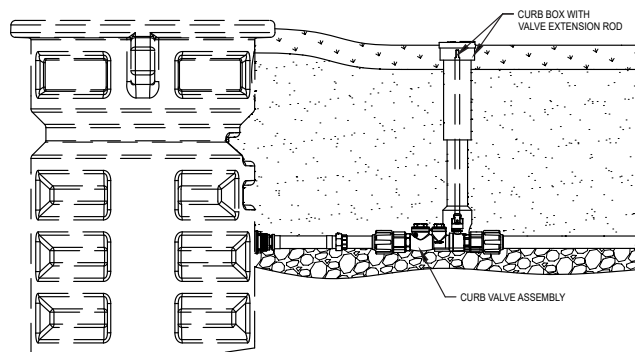
- Class 30 cast iron construction
- Conforms to ASTM A48 / A48M-03 specifications
- Designed to fit over and attach to a 1.25" or 2" curb stop valve
- Two sizes, selected by valve burial depths; adjustable 30" to 42" or 42" to 60"
- Depth adjustments, secured by internal threads
- Bolt down cover, imprinted with SEWER marking
- Steel centering ring, for positioning and stabilizing the rod



### Valve Extension Rod #10-4876 - 24" Rod #10-4877 - 36" Rod #10-4866 - 48" Rod

- 5/8" OD steel rod with means for connecting to the curb stop valve

## Typical Curb Valve and Box Installation



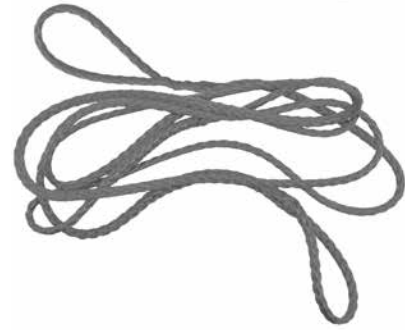
SK3240

### Anti-Siphon Option # 10-4828



- Adapts to a 6932 replacement assembly
- Provides pump station air relief and anti-siphon protection
- 304 SS construction
- Rated up to 235 psi
- Pipe nipples and "Tee" included with the 6932

### Red Lifting Rope #39-0162



- 3/8" x 12' braided polypropylene lifting rope
- For lifting pumps weighing up to 150 pounds
- Designed for strength, ease of handling and for mounting onto a pump's lifting bail

### Flexible Discharge Hose #10-4751



- 1.25" NPT x 18" long
- Braided 304 SS flexible hose
- Rated up to 520 psi
- Other lengths available

### Flex Hose Discharge Assembly #10-2038 -30" Flex Pipe

- 200 PSI flex pipe with 1.25" disconnect campbell

**#39-0169-** 1' pull rod for disconnect campbell

### Flex Hose Discharge Elbow #018386- galvanized #019764- stainless steel

## **EQD Adapter Assemblies**

**#10-4824-** Round female to rectangular male

**#10-3592-** Rectangular female to round male



- Enables a 6932 replacement assembly equipped with a round or rectangular EQD to adapt to the other type female EQD connection in the field
- 12" cord length, 14-6 SOOW jacketed neoprene cord

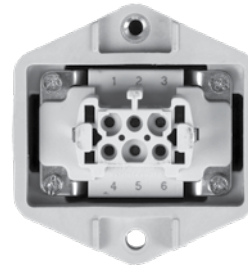
## **EQD Housing Assembly**

**#10-4931-**Rectangular Housing, Male

**#10-4932-**Rectangular Housing, Female

**#10-4979-**Round Housing, Female

**#10-5233-**Round housing, Male



**10-4932**



**10-4979**



## **RWD-LPS Simplex Control, For Pumps Equipped with Intergrated Control Switches #61204-0001 & #61204-0002**

- NEMA 4X enclosure, UL and CSA Listed
- Two types; Standard design and one with a generator receptacle for a 20 amp NEMA L21-20P plug
- Manual run function and high water alarm
- Remote monitoring capability and ability to access historical performance data with addition of Zcontrol gateway
- For complete details refer to sales document ZM3152
- Duplex RWD LPS panel available - 62304-0001 & 62304-0002



**MAIL TO:** P.O. BOX 16347 • Louisville, KY 40256-0347  
**SHIP TO:** 3649 Cane Run Road • Louisville, KY 40211-1961  
(502) 778-2731 • 1 (800) 928-PUMP • **FAX** (502) 774-3624

**visit our web site:**  
**[zoellerengineered.com](http://zoellerengineered.com)**

Trusted. Tested. Tough.®